

# Future CAP: Scenario Analysis Change Maps

---

*Mapped examples of the outcomes of using region and budget combinations to define payment rates for the Basic Payment Scheme in Scotland from 2014*

Dave Miller  
Doug Wardell-Johnson  
Keith Matthews  
The James Hutton Institute

Neil Swanson  
Adele McAnuff  
Rural and Environment Science and Analytical Services Division  
Scottish Government

## Contents

Introduction .....	3
Progressive Baseline .....	4
1. LCA Farm Level 1a – Historic.....	5
2. LCA Farm Level 1b – Historic.....	6
3. LCA Farm Level 1c – Historic .....	7
4. LFA Farm Level – Historic .....	8
5. Land Type Farm Level – Historic .....	9
6. LCA Parish Level 1a – Historic .....	10
7. LCA Parish Level 1b – Historic.....	11
8. Historic SFPS Parish – Historic.....	12
9. Land Type Parish – Historic.....	13
10. LCA Farm Level 1a – Economic.....	14
11. LCA Farm Level 1b – Economic .....	15
12. LCA Farm Level 1c – Economic.....	16
13. LFA Farm Level – Economic.....	17
14. Land Type Farm Level – Economic.....	18
15. LCA Parish Level 1a – Economic .....	19
16. LCA Parish Level 1b – Economic.....	20
17. Historic SFPS Parish – Economic .....	21
18. Land Type Parish – Economic.....	22
19. LCA Farm Level 1a – 90:10 Weight .....	23
20. LCA Farm Level 1b – Production Weight.....	24
21. LFA Farm Level – Production Weight.....	25
22. Land Type Farm Level – Production Weight .....	26
23. LCA Parish Level 1a – Production Weight .....	27
24. Land Type Parish – Production Weight.....	28
25. LCA Farm Level 1a – Environmental Weight.....	29
26. LCA Farm Level 1b – Environmental Weight.....	30
27. LFA Farm Level – Environmental Weight .....	31
28. Land Type Farm Level – Environmental Weight .....	32
29. LCA Parish Level 1a – Environmental Weight .....	33
30. Land Type Parish – Environmental Weight.....	34

## Introduction

This document is intended to accompany the “Future CAP: Scenario Analysis Summaries” document in which summary results from all of the scenarios modelled for the regionalisation of the Basic Payment Scheme were presented in terms of change by farm size, sector, and agricultural region. This document presents the results in terms of change in payment rate per eligible land parcel when compared to the ‘progressive baseline’ for each scenario. For ease of reference the section numbers are the same in both documents.

## Progressive Baseline Description

The progressive baseline is calculated by distributing current single farm payment entitlements to the land parcel level. All ineligible LCA classes and ineligible IACS land uses are first excluded. Entitlements are then applied to the best quality LCA land for each business in descending order of entitlement value. If the eligible land in use by a business exceeds the total number of entitlements held by that business, then the entitlements are linearly scaled in order that all eligible land in a business is allocated a payment rate.

Since there may be multiple claims by different businesses per land parcel, it is not possible to produce a business-level map of the baseline based on usership. Instead we must “flatten” payments for each business to the land parcel level in order to represent the baseline at that level.

In the case of multiple claims per land parcel, and claims by multiple businesses per land parcel, the calculated amounts per claim are grouped together before a payment rate is calculated for the land parcel. It is the payment rate per land parcel that is represented in the Current (Progressive Baseline) Payment €/Ha map.

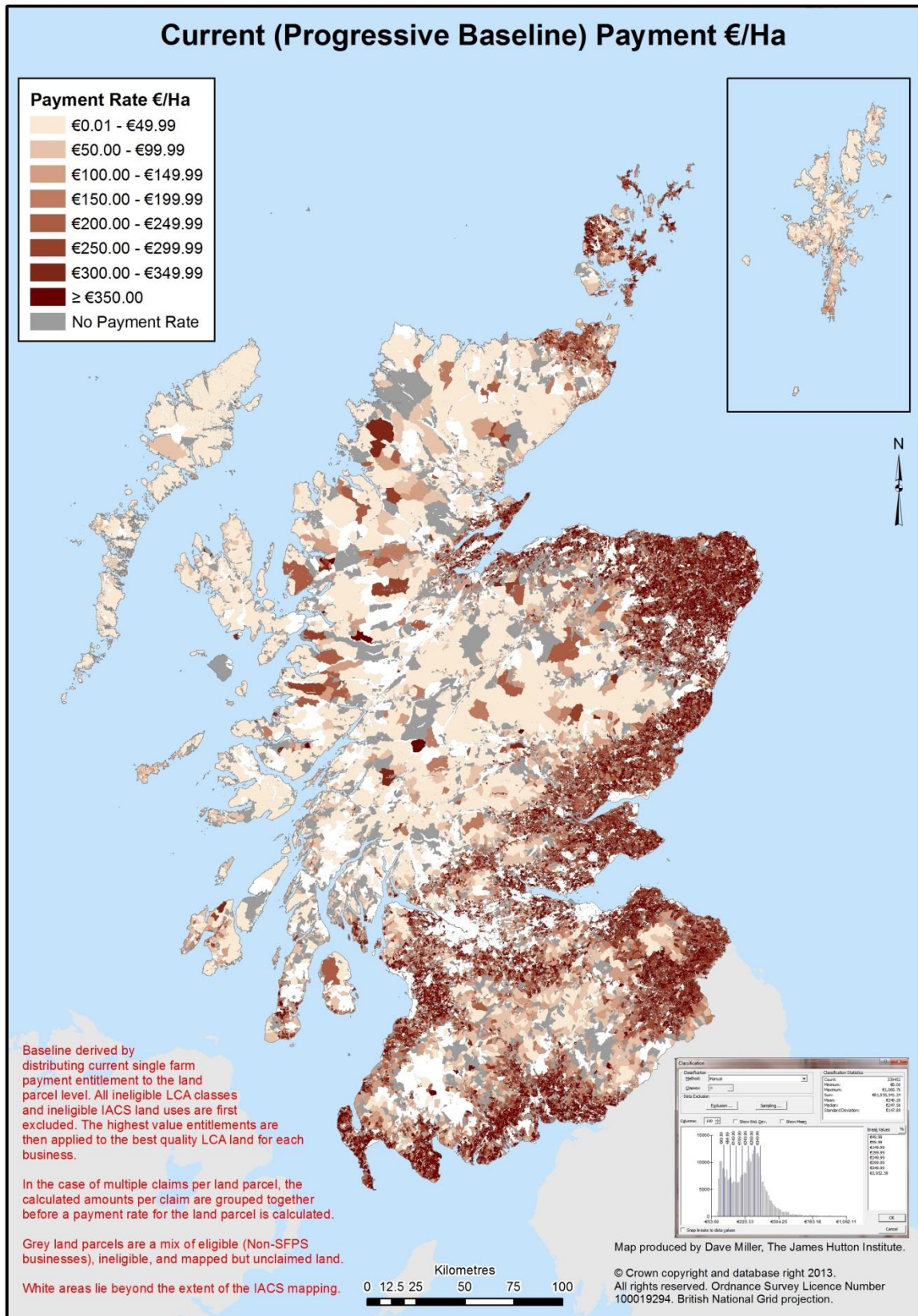
## Change Maps

Change is represented as a change in the payment rate per hectare for each land parcel when compared to the Progressive Baseline. The data is classified into steps of €50 either side of zero with a threshold of plus or minus €2 per hectare included in the centre ‘zero change’ category.

## Interpretation Notes

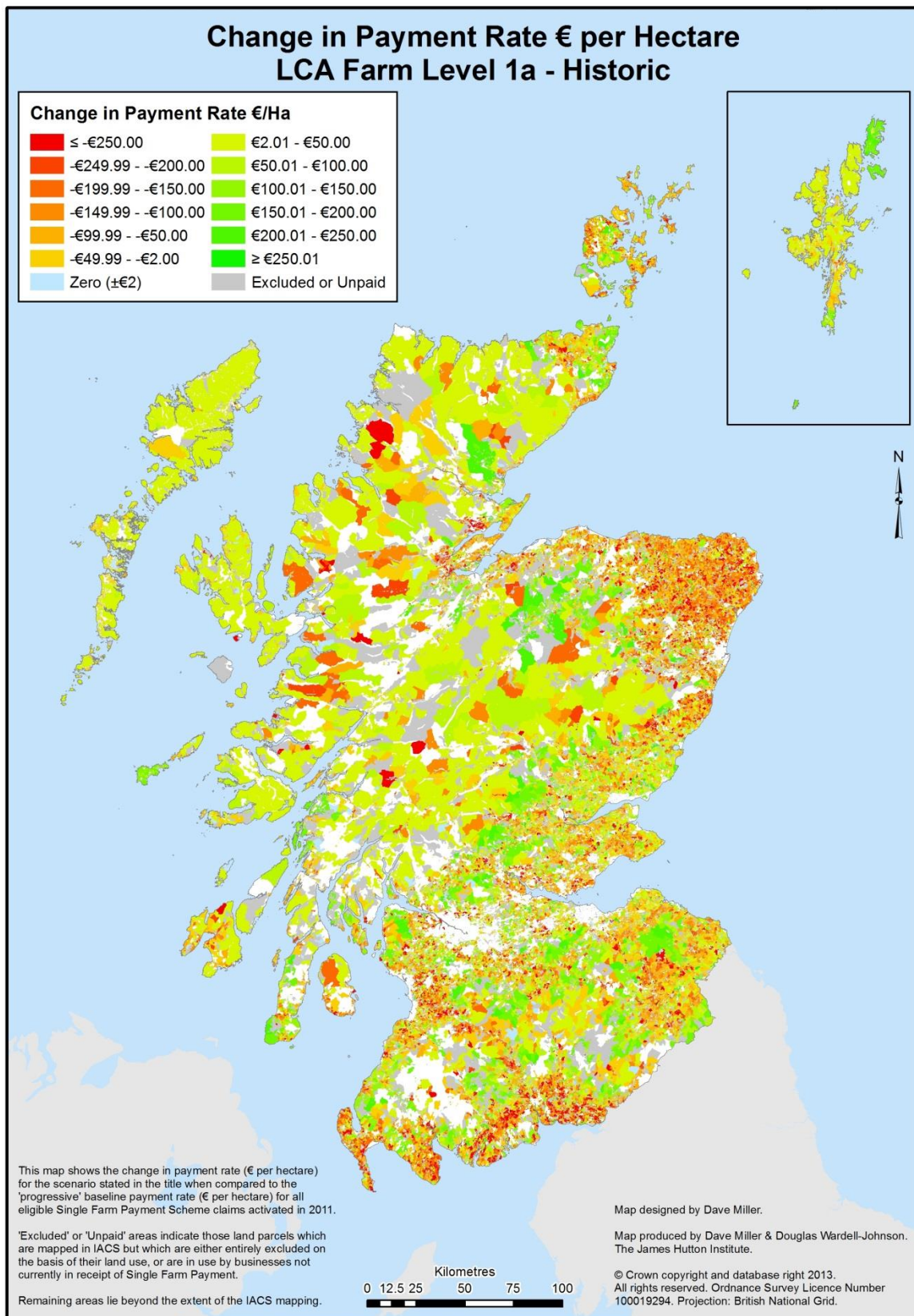
Although the payment rate per hectare is calculated using claimed area, claimed area may not always make up the entire mapped area of the land parcel. Where there is a large difference between the mapped area of the land parcel and the total area of claims within that parcel, the impression may be of a large payment rate across a large area or of a large change in payment across a large area. However in many cases, particularly in the north and west, the payment rate is calculated using a much smaller claimed area than the total mapped area of the land parcel. The result is apparently large areas of either current high entitlement or large degree of change when the truth may be that the claimed areas are far smaller than the mapped area for those land parcels.

# Progressive Baseline Map

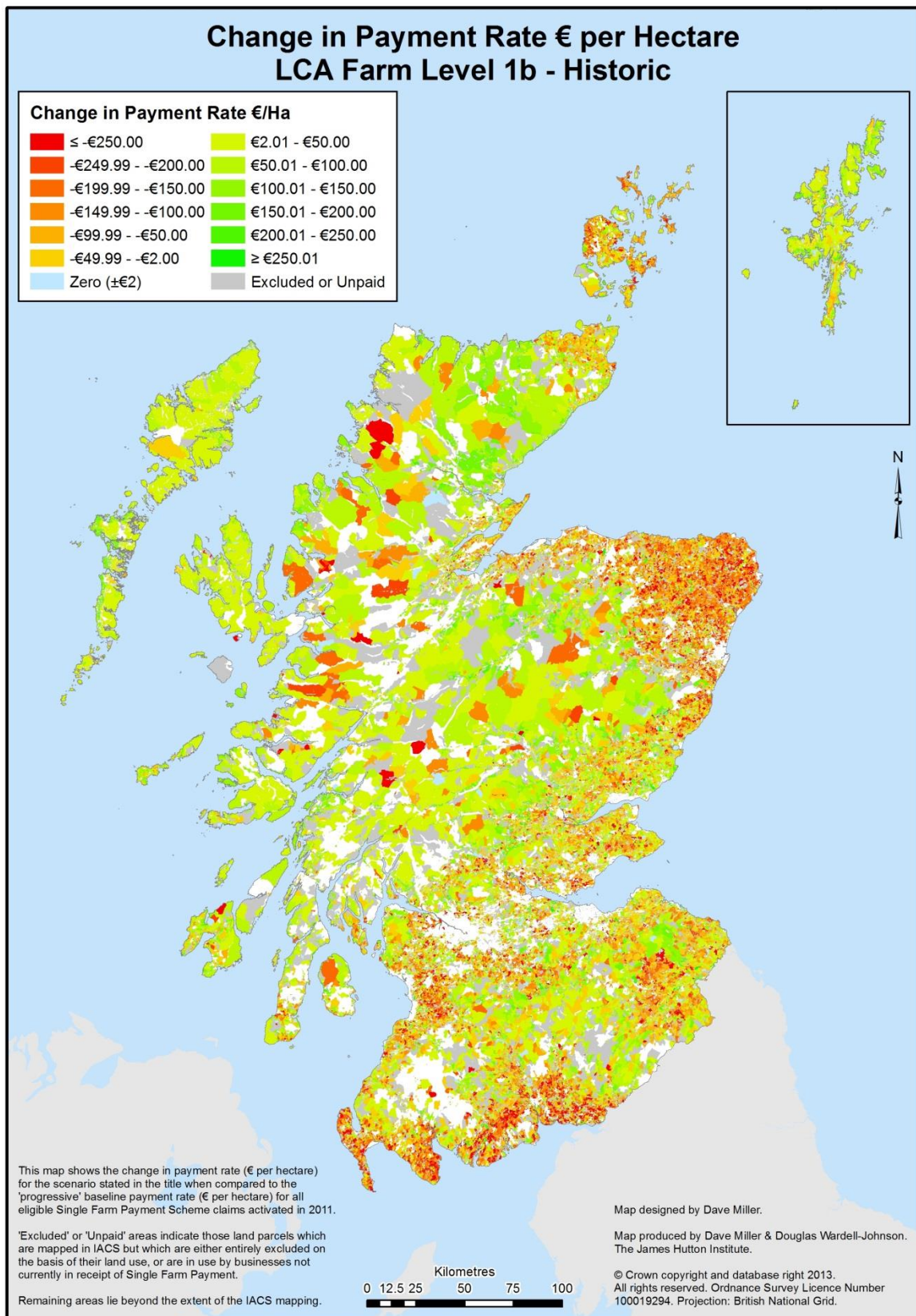




# 1. LCA Farm Level 1a - Historic

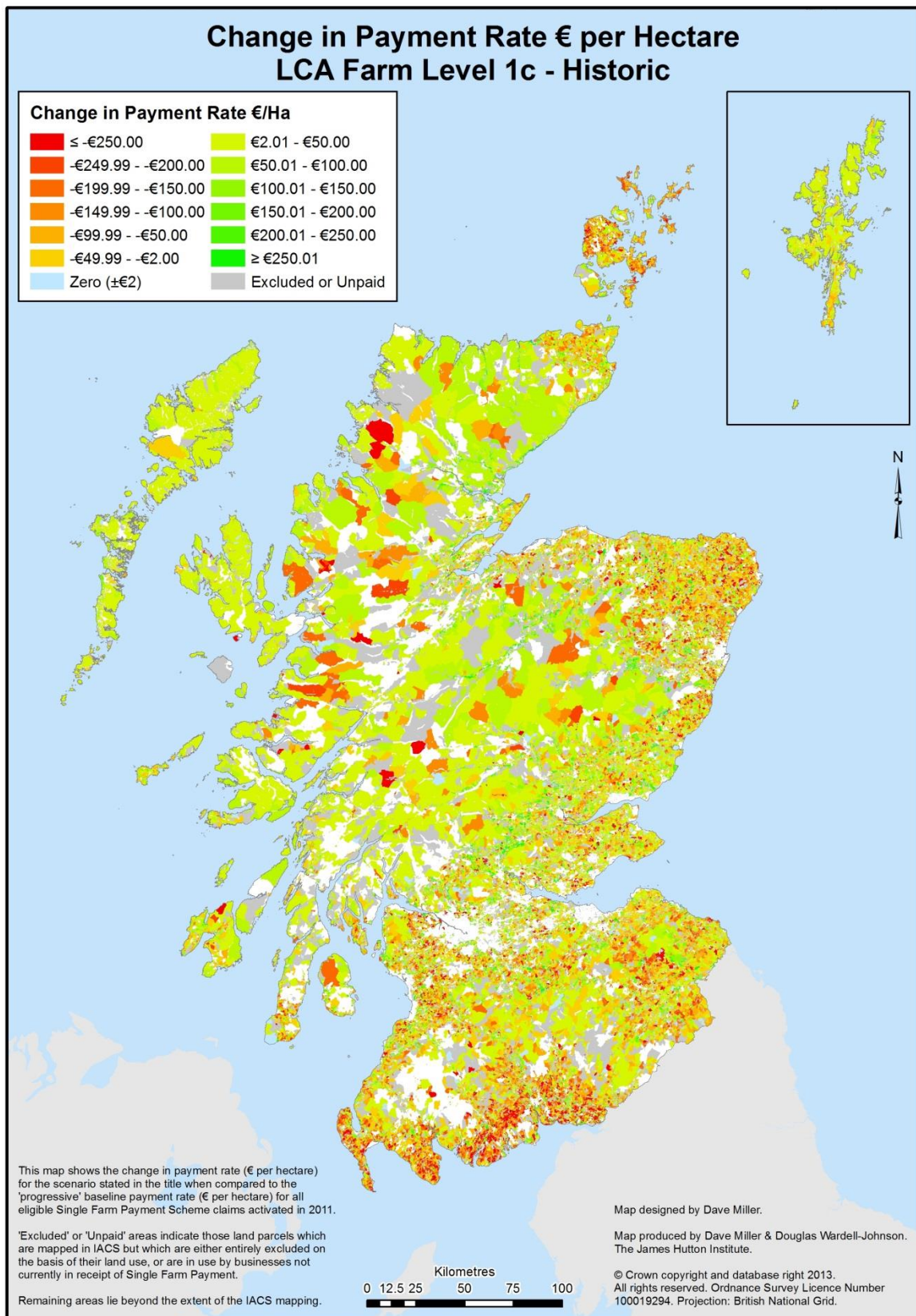


## 2. LCA Farm Level 1b – Historic

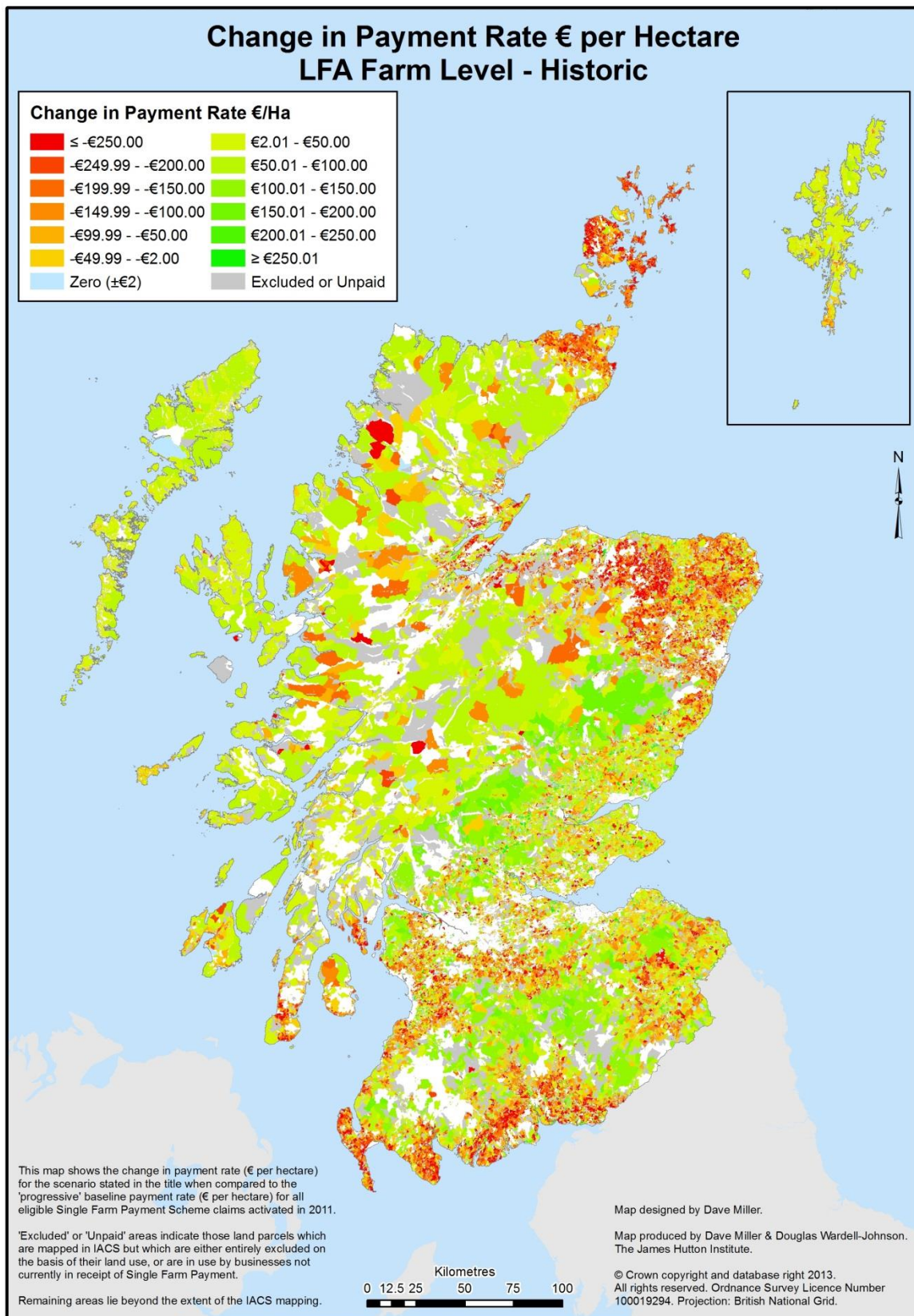




### 3. LCA Farm Level 1c - Historic

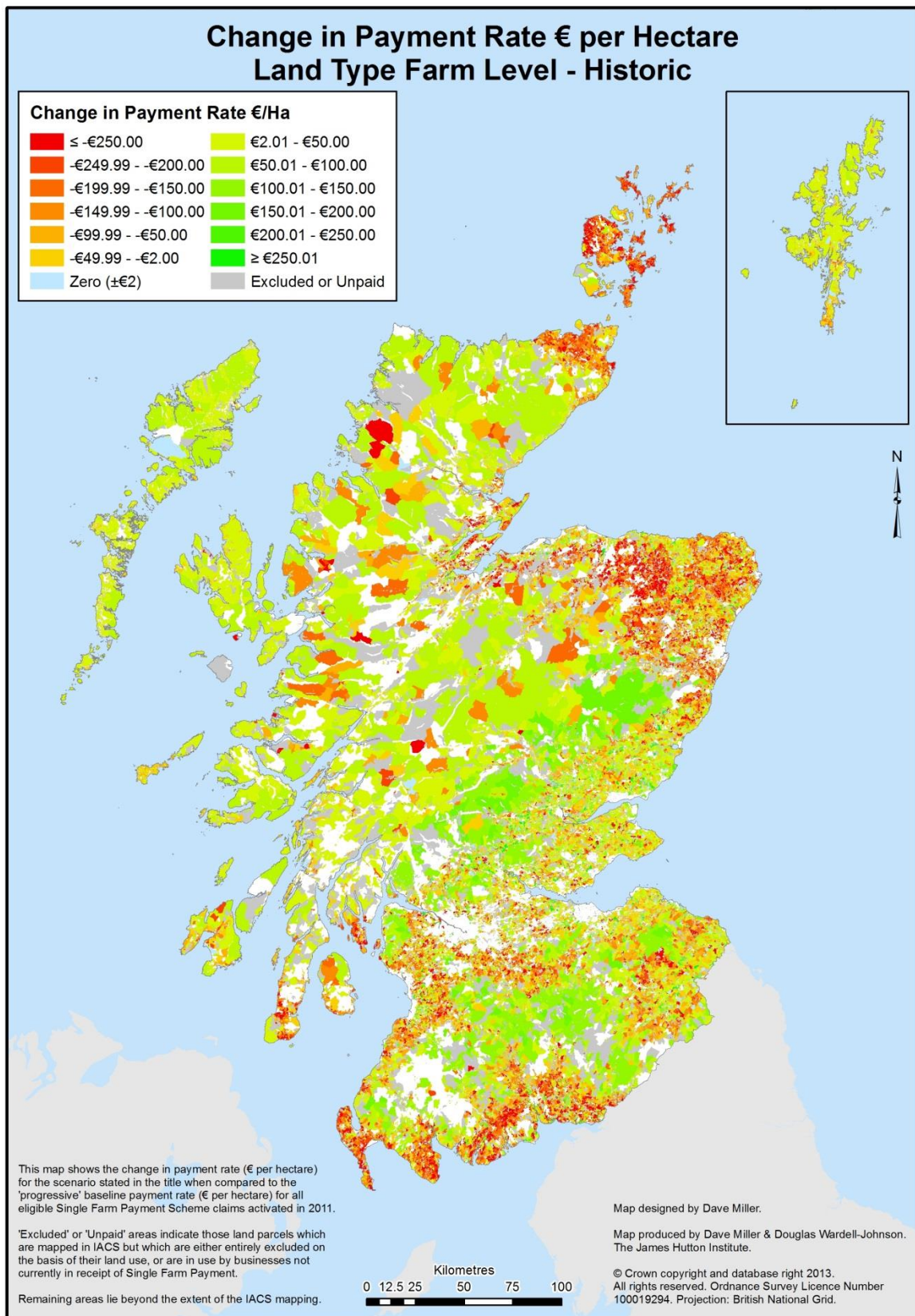


## 4. LFA Farm Level – Historic

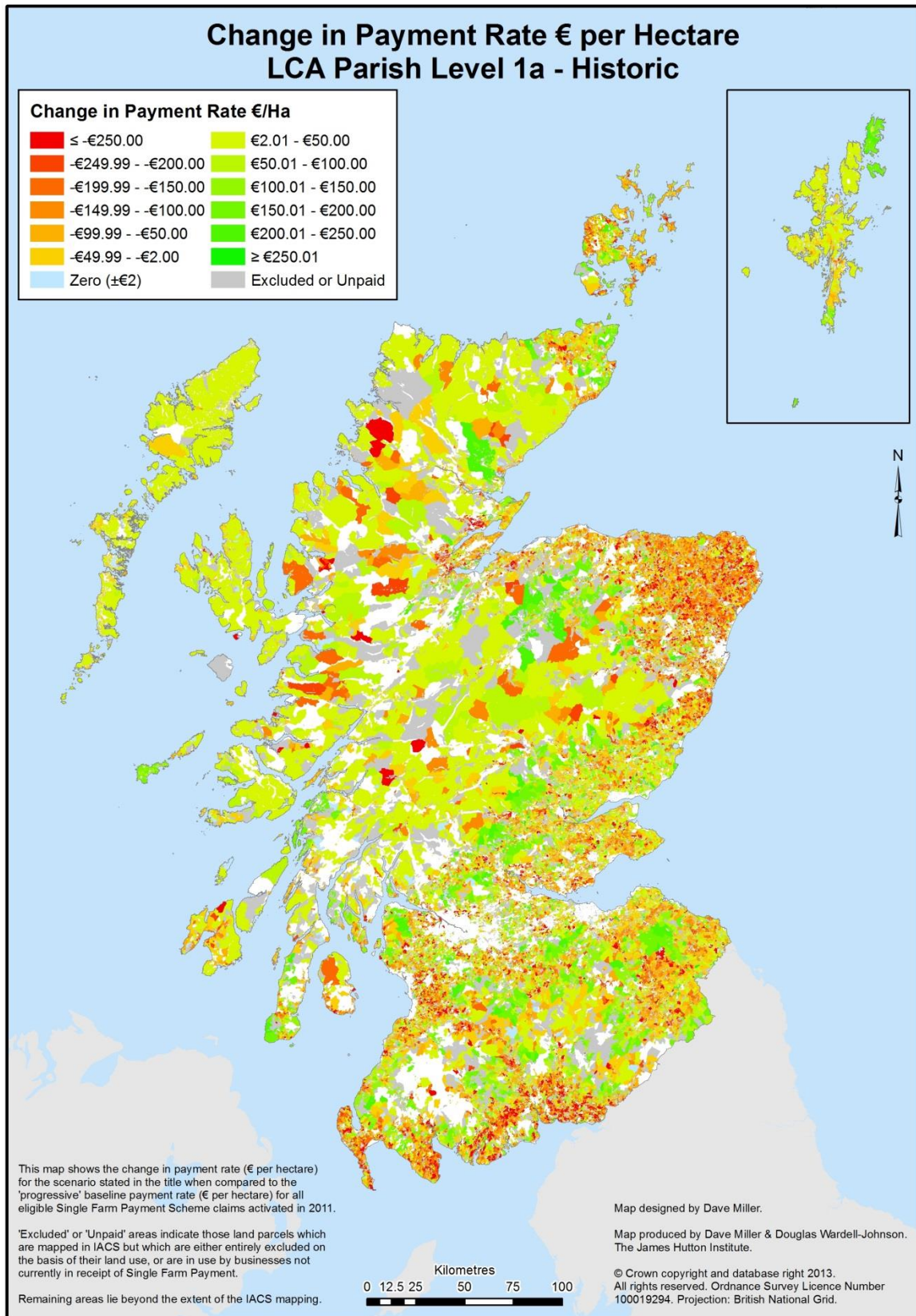




## 5. Land Type Farm Level - Historic

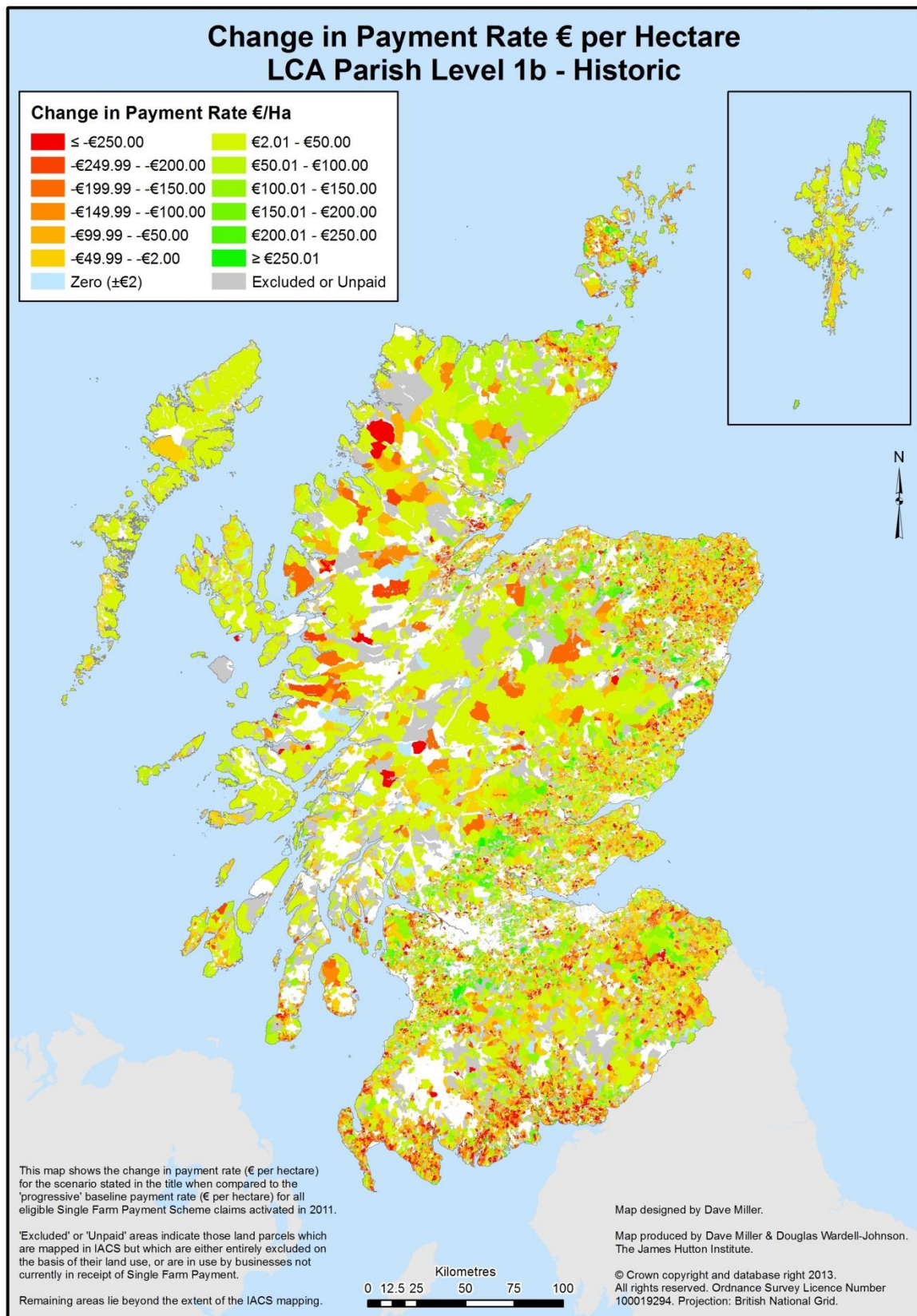


## 6. LCA Parish Level 1a – Historic

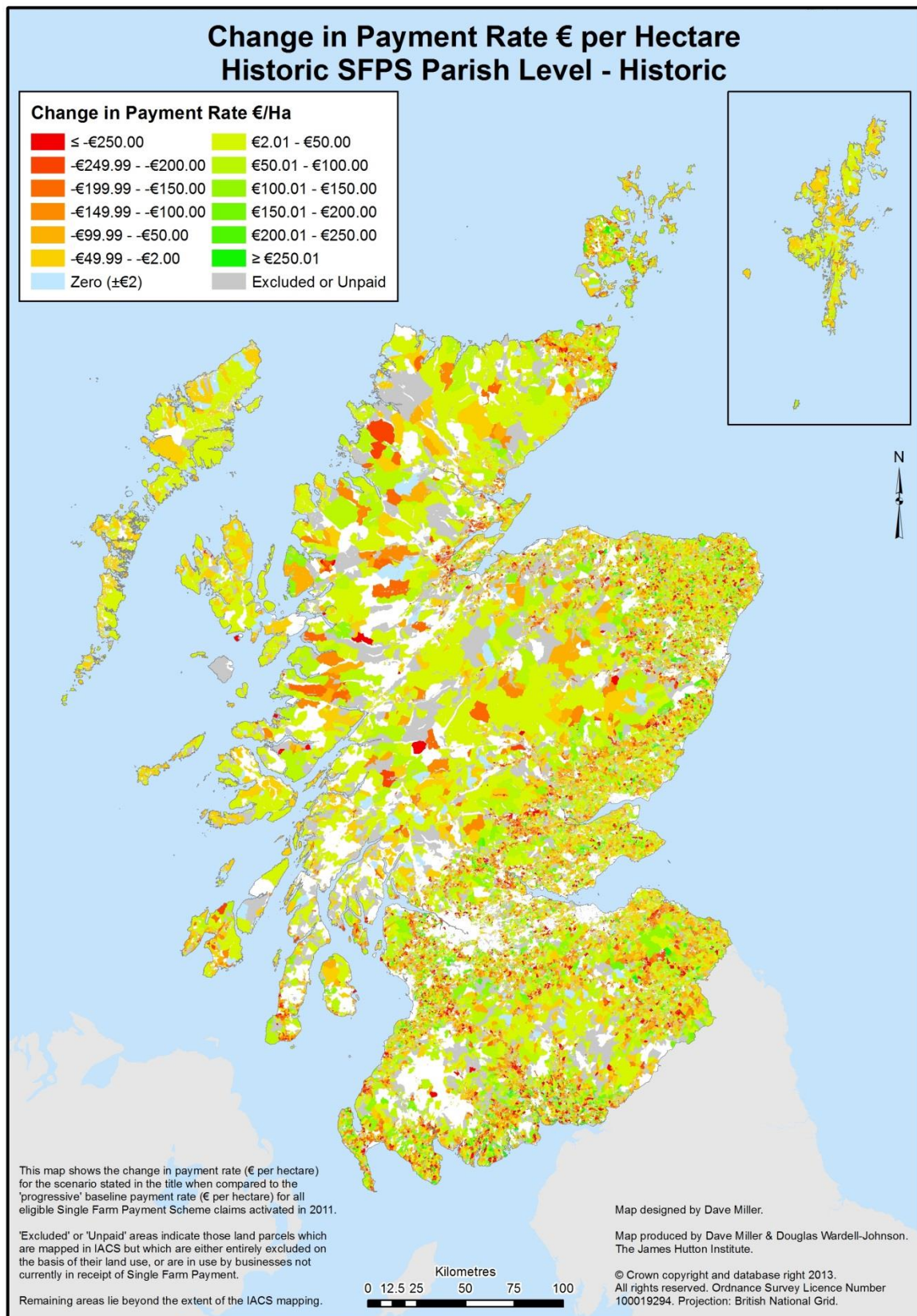




## 7. LCA Parish Level 1b – Historic

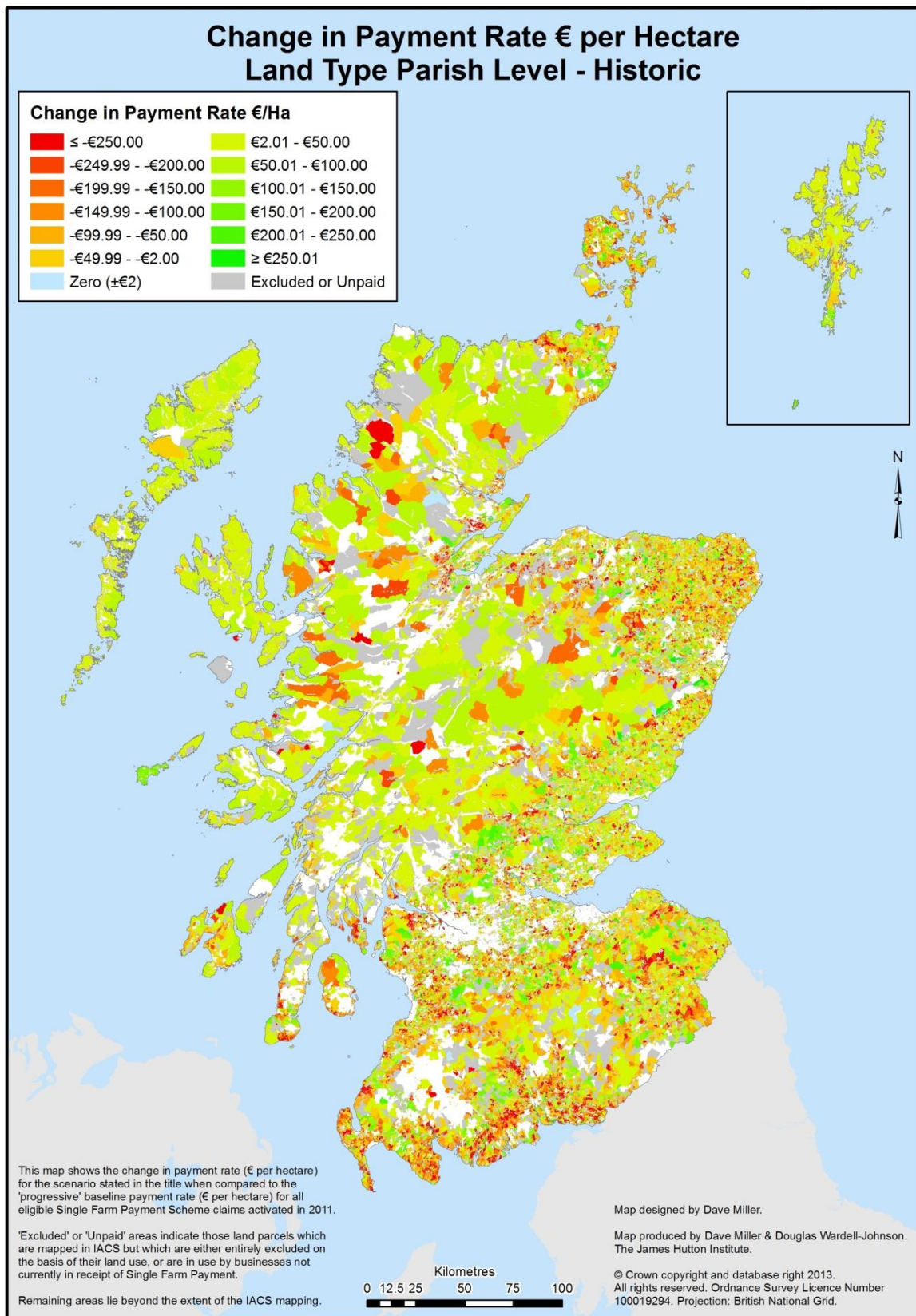


## 8. Historic SFPS Parish – Historic

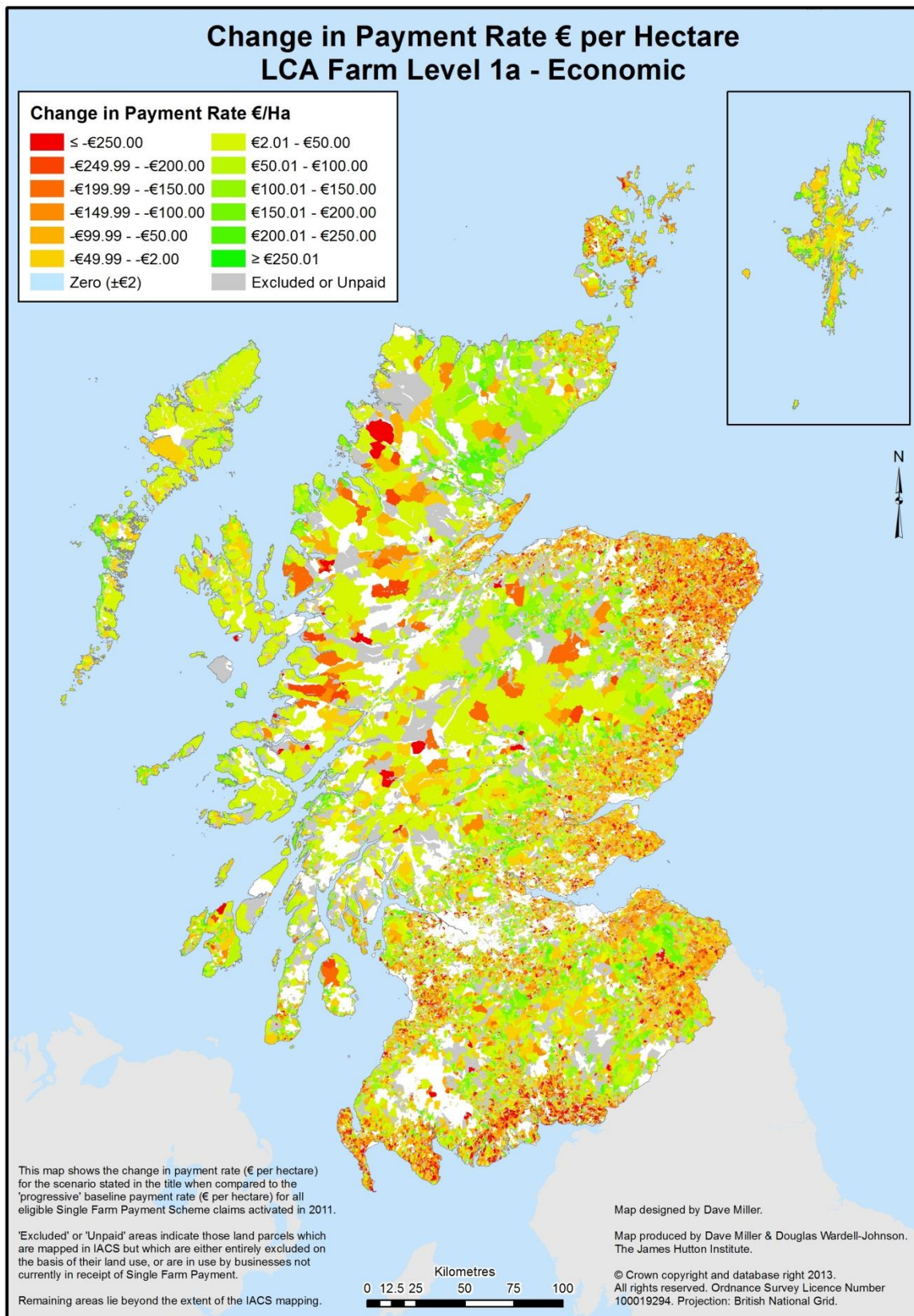




## 9. Land Type Parish – Historic

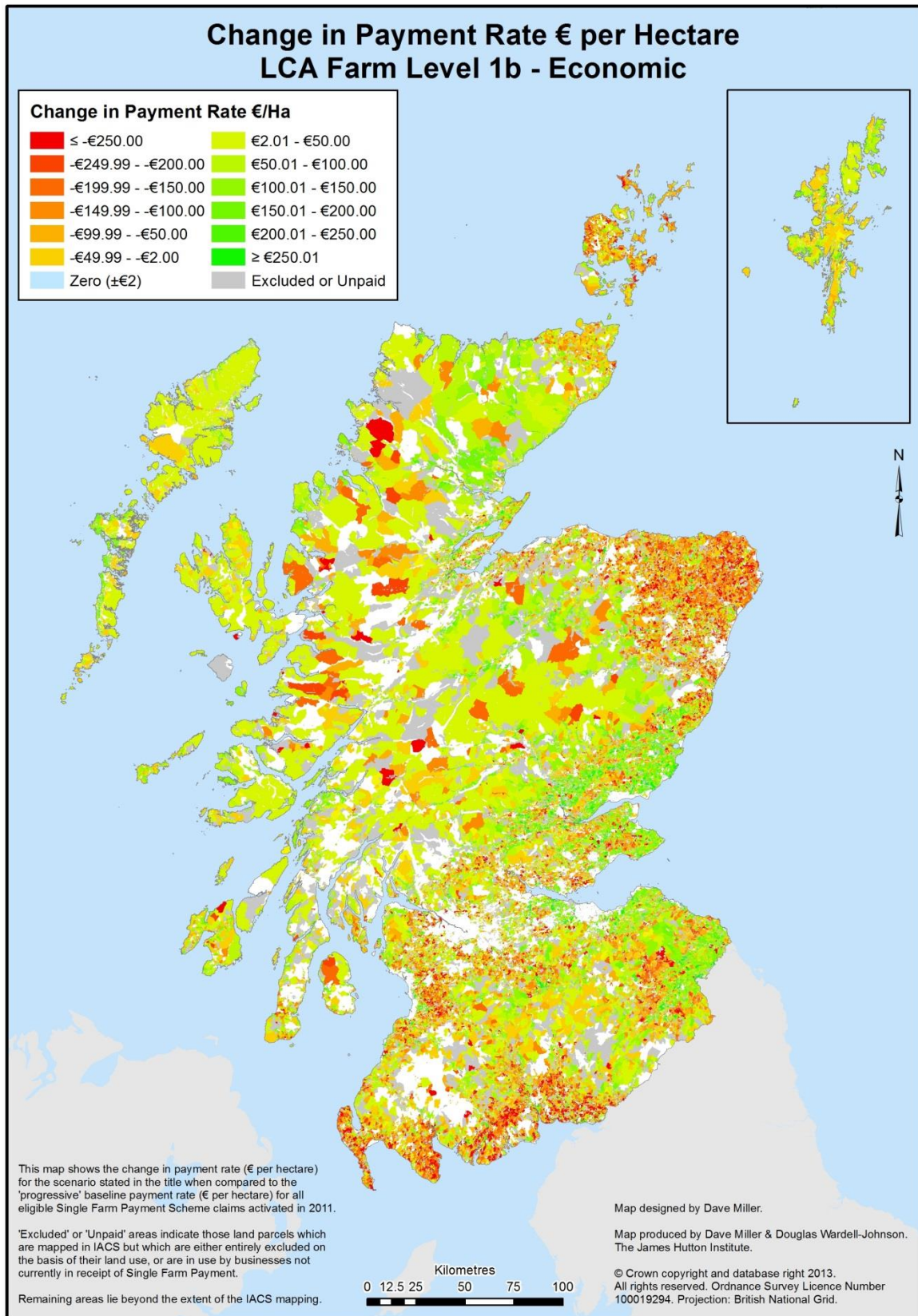


## 10. LCA Farm Level 1a - Economic

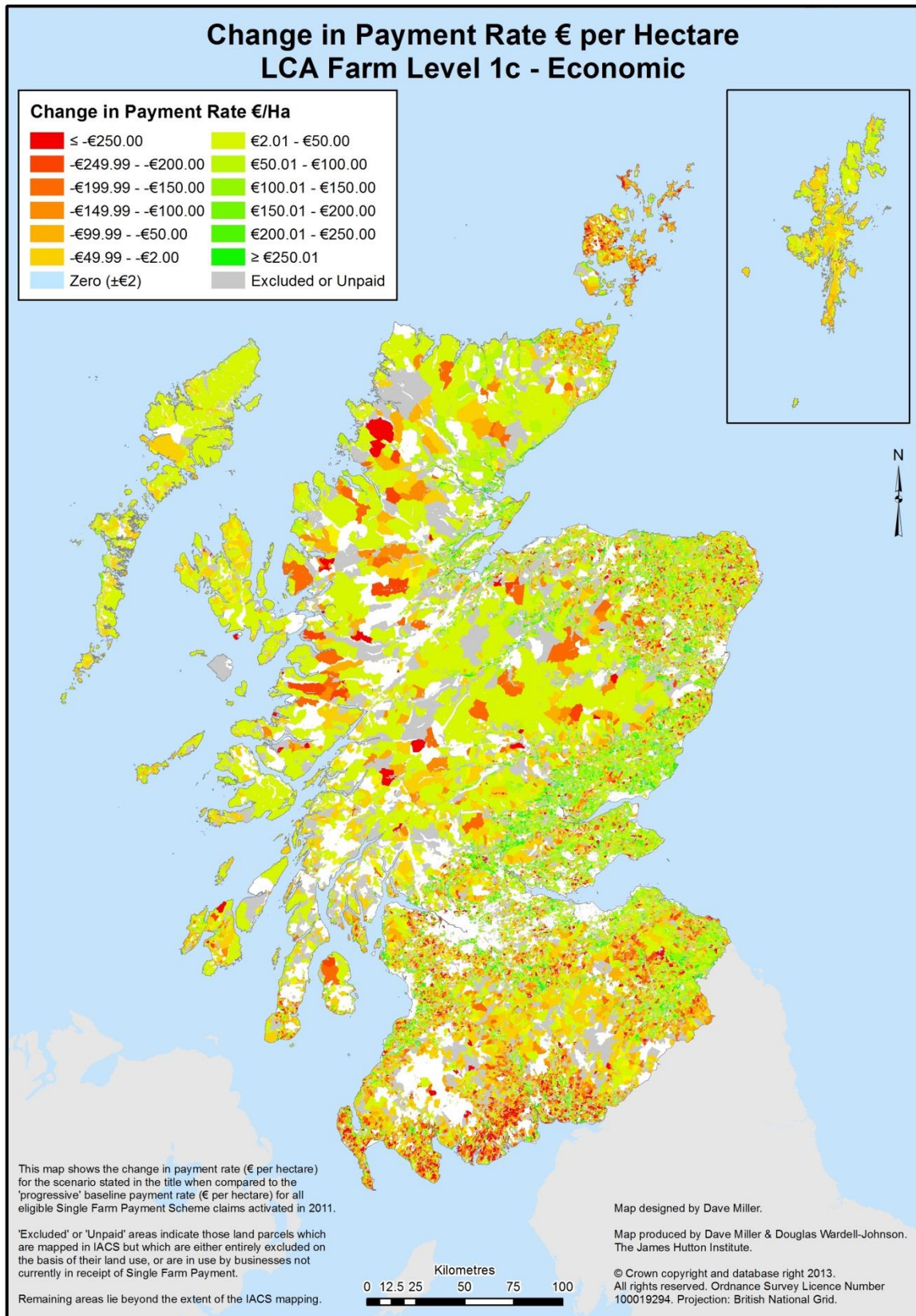




## 11. LCA Farm Level 1b – Economic

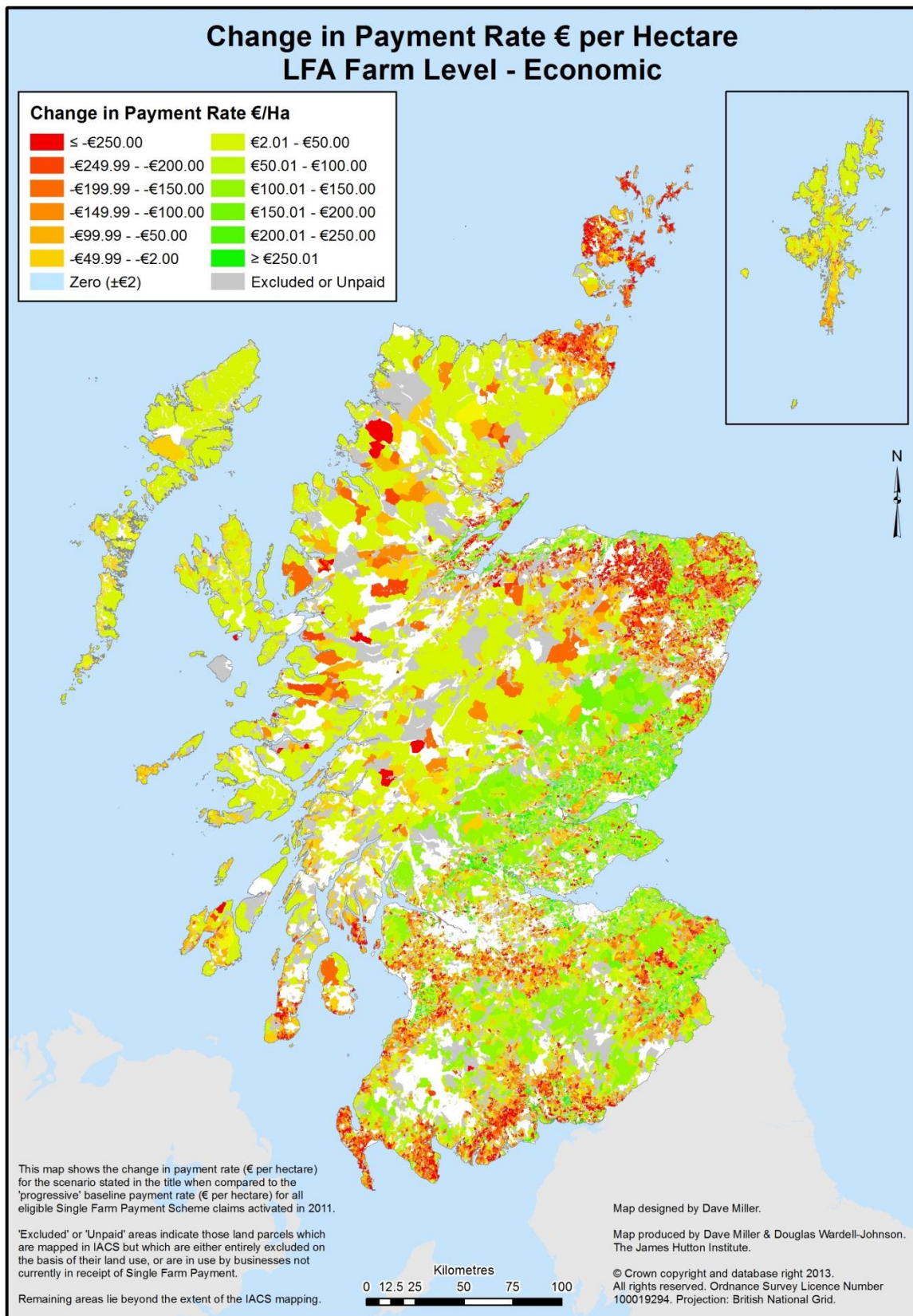


## 12. LCA Farm Level 1c - Economic

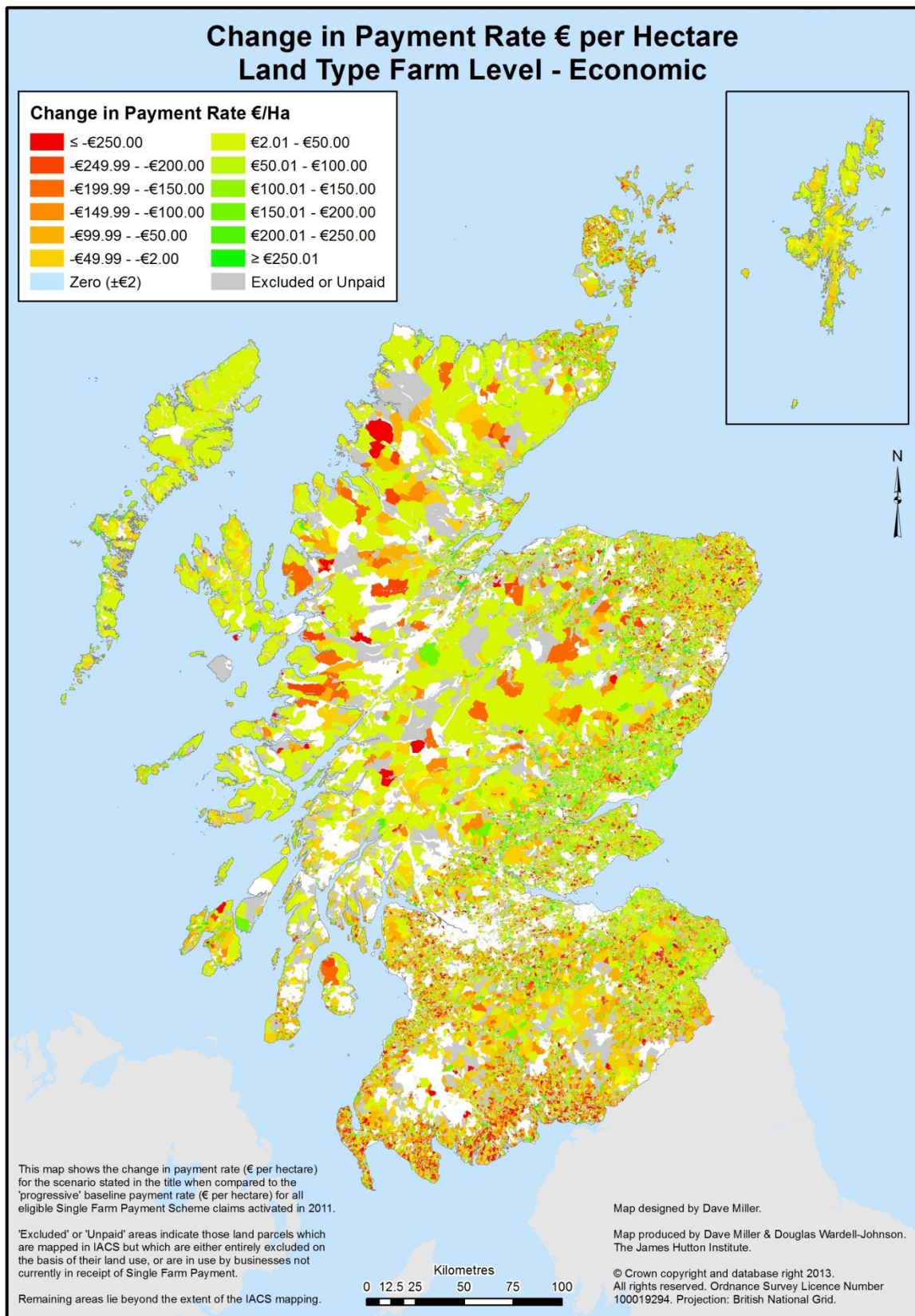




### 13. LFA Farm Level - Economic

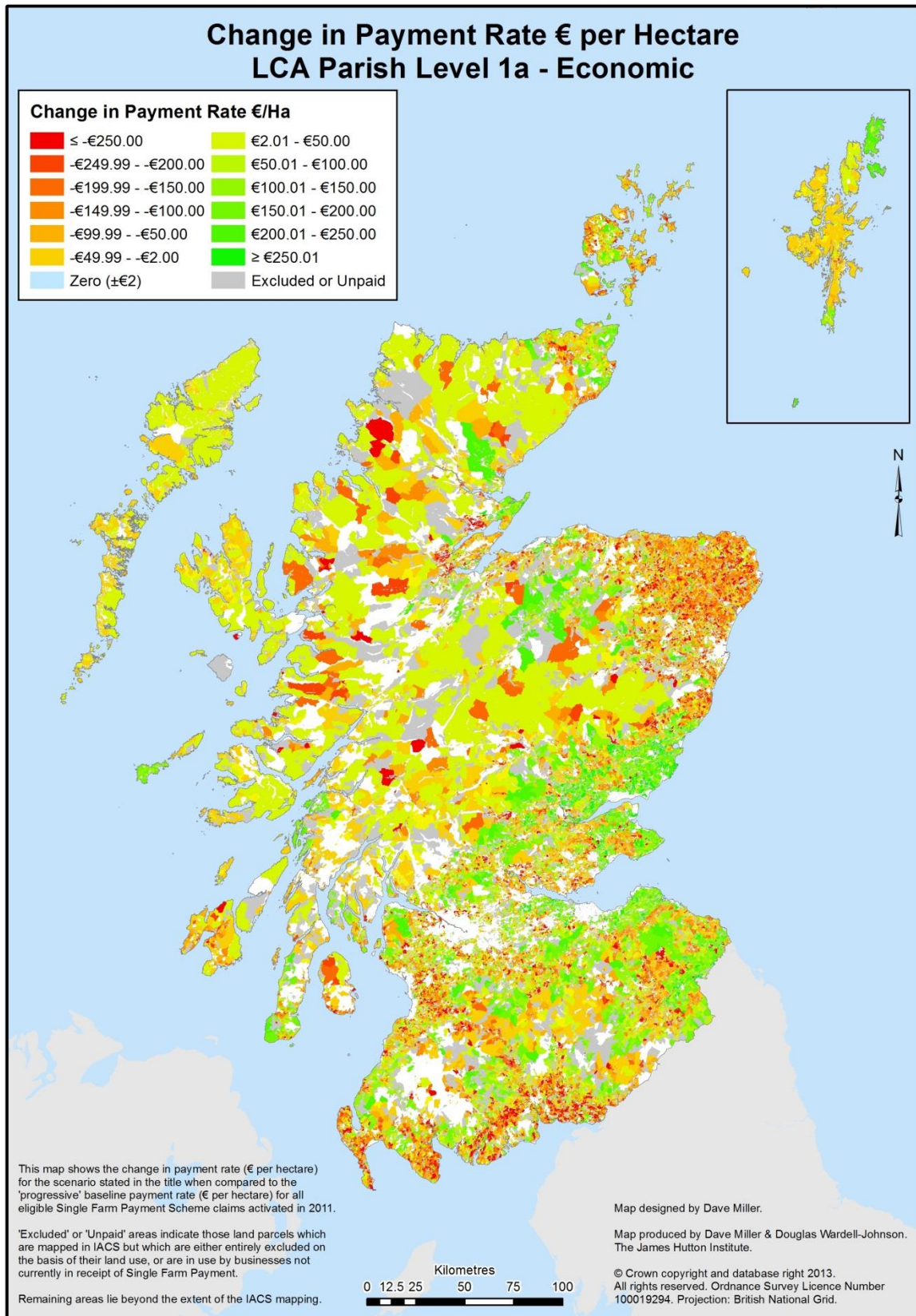


## 14. Land Type Farm Level - Economic

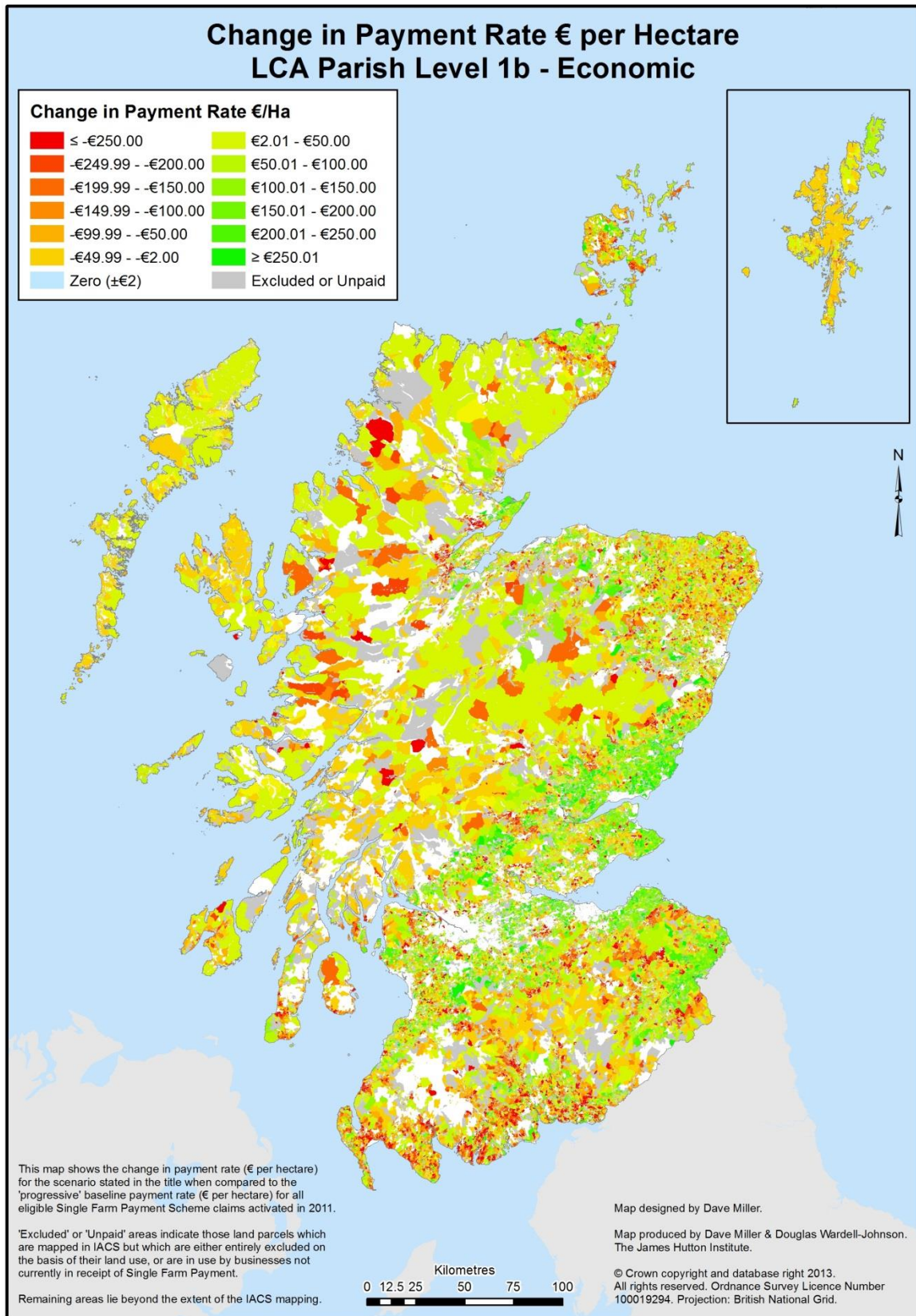




## 15. LCA Parish Level 1a - Economic

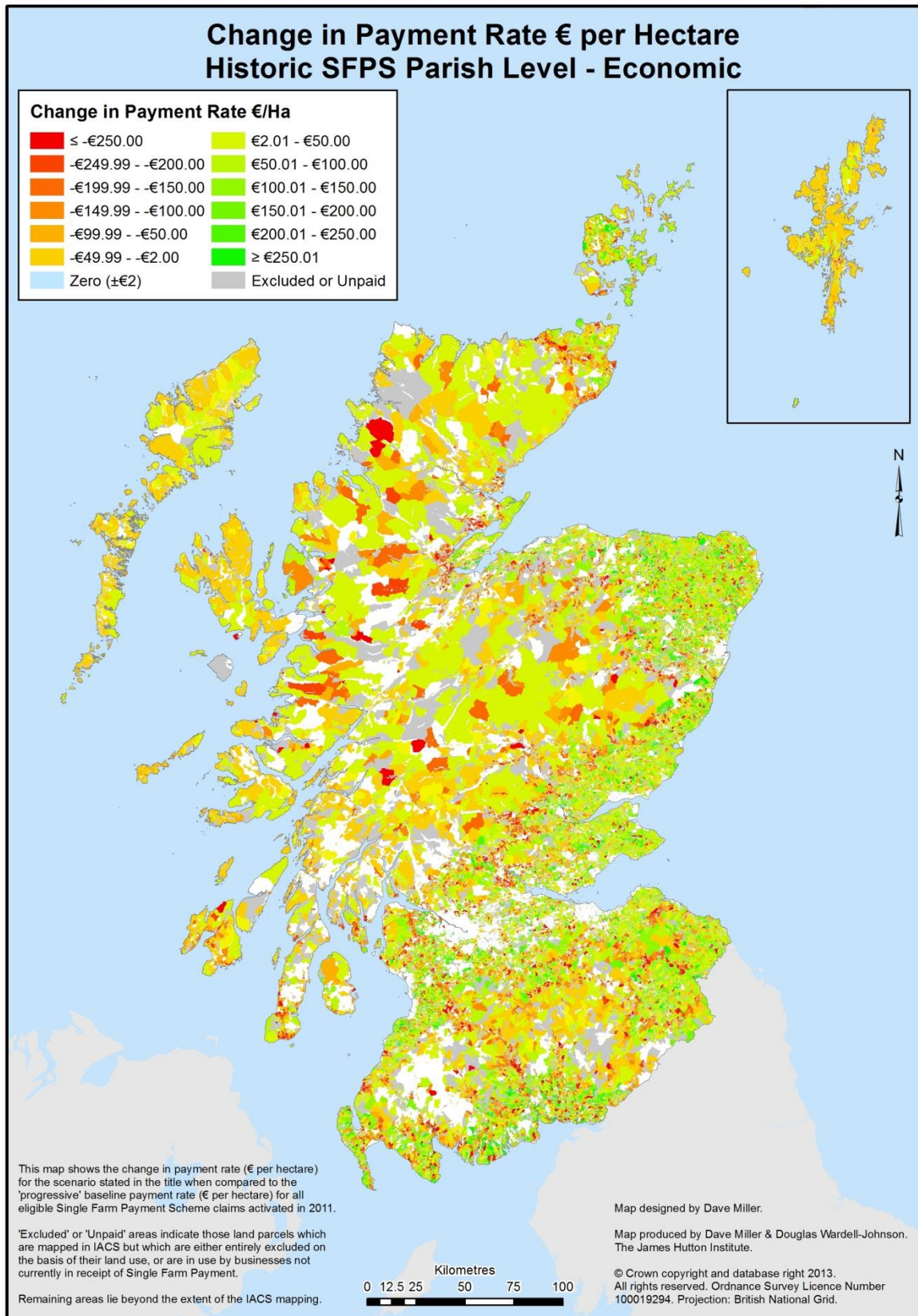


## 16. LCA Parish Level 1b - Economic

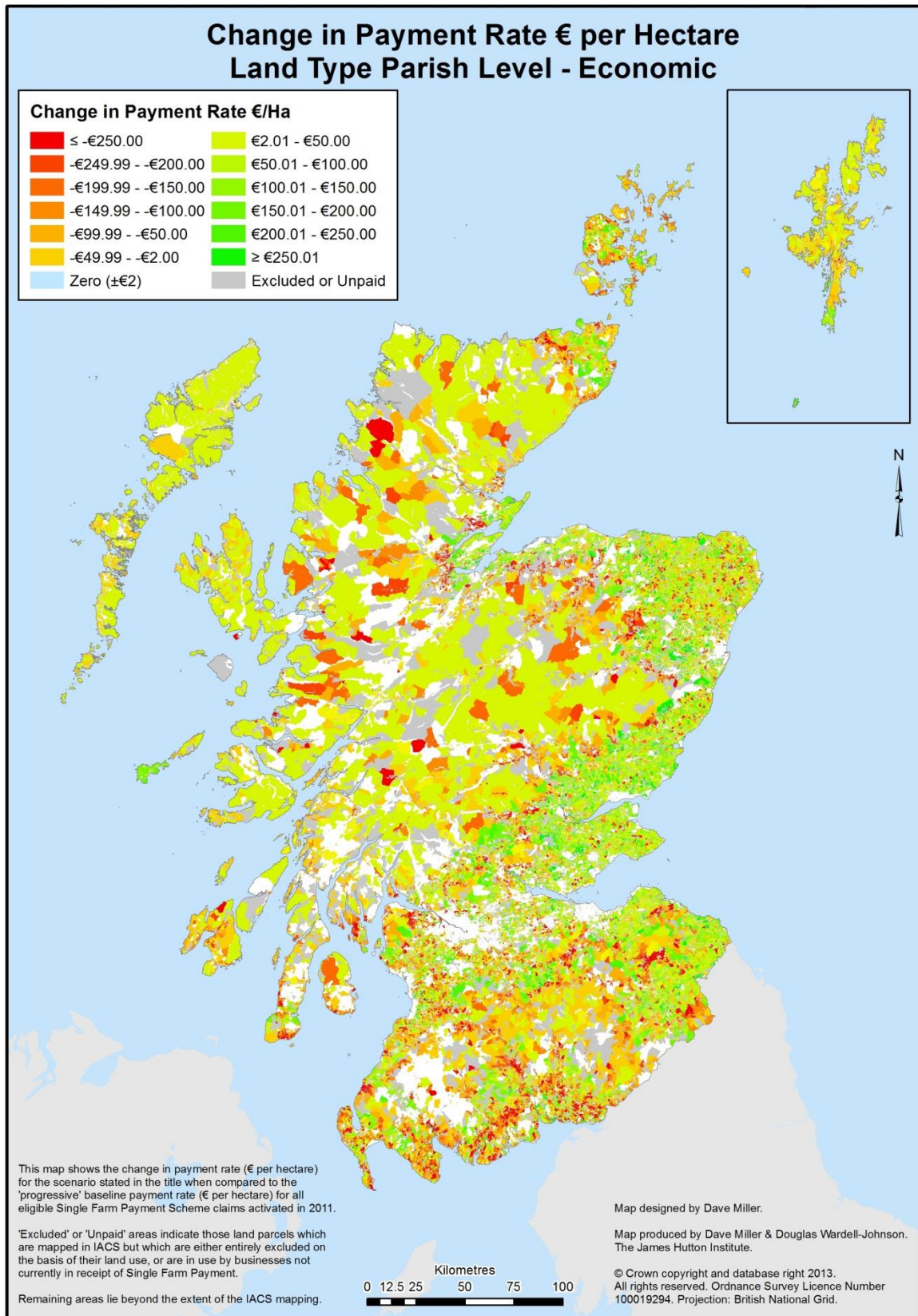




## 17. Historic SFPS Parish – Economic

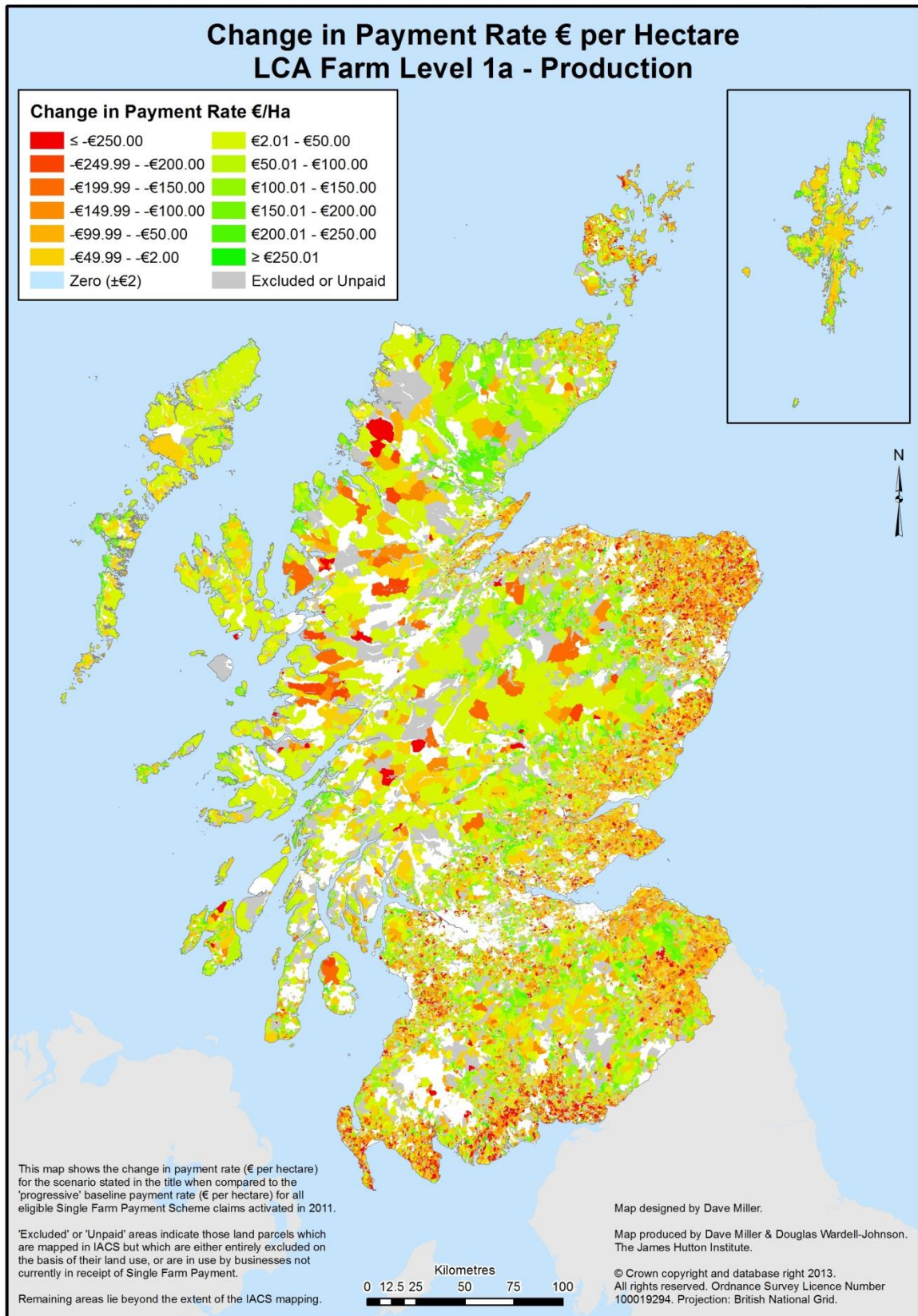


## 18. Land Type Parish – Economic

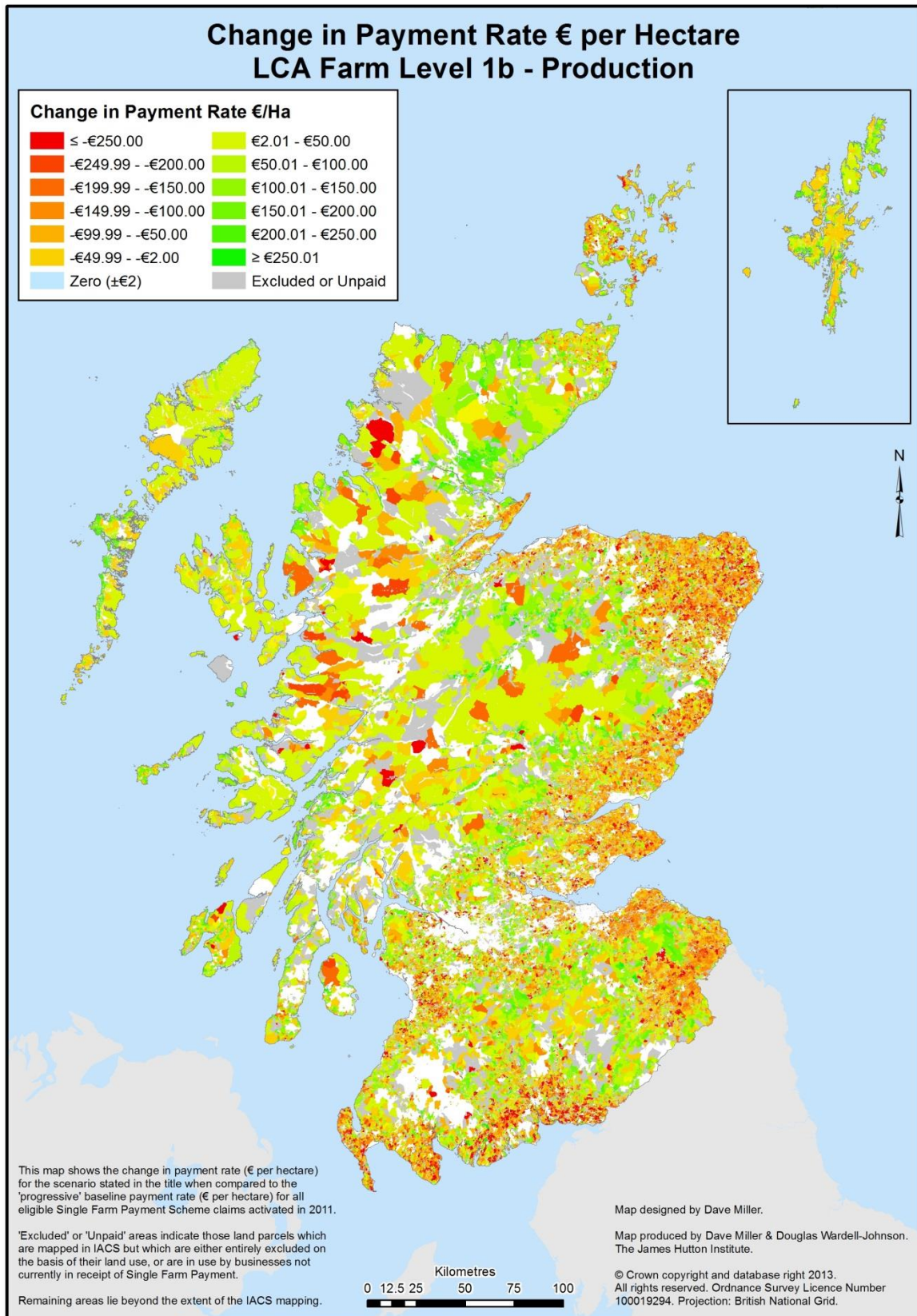




## 19. LCA Farm Level 1a – 90:10 Weight

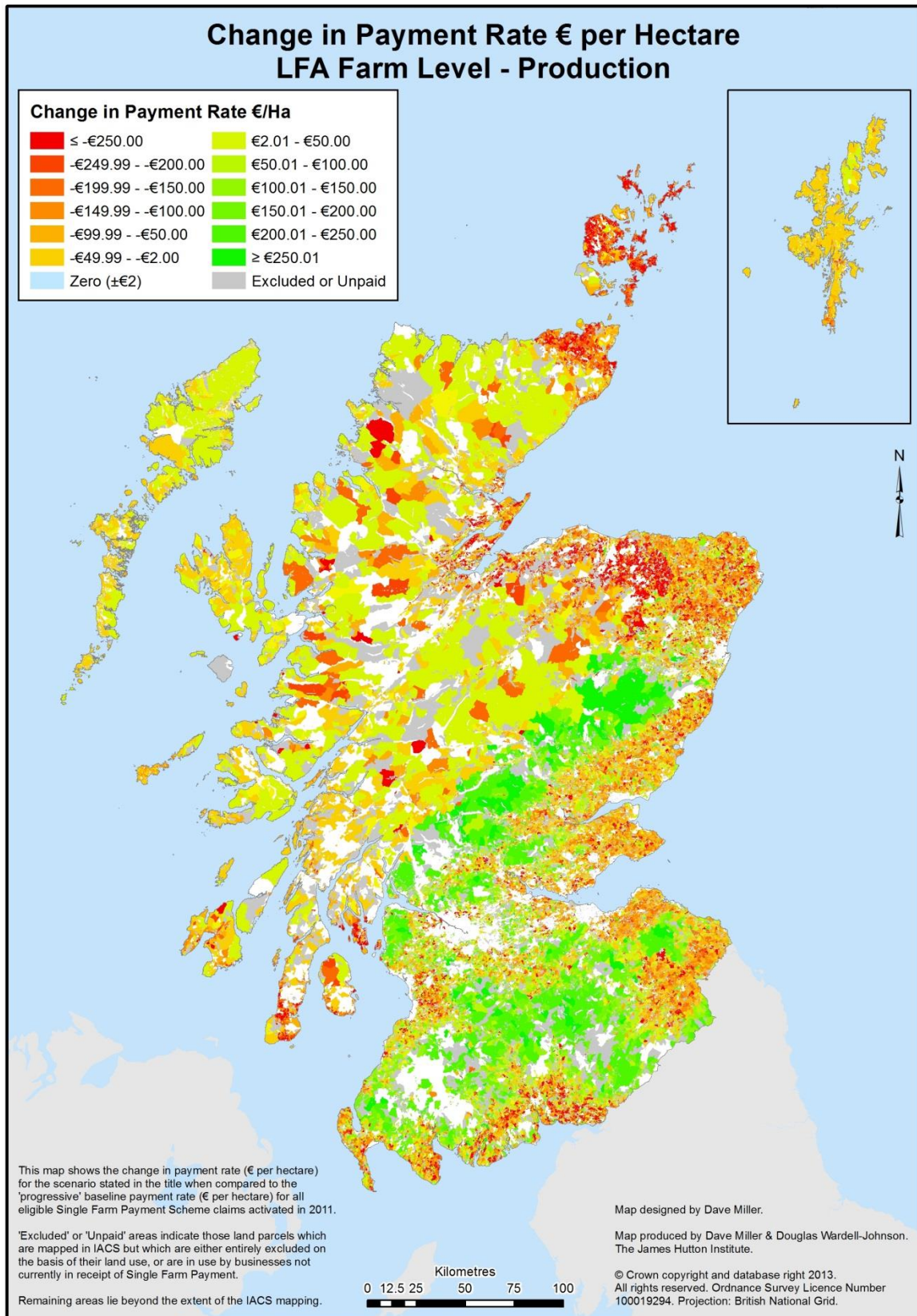


## 20. LCA Farm Level 1b – Production Weight

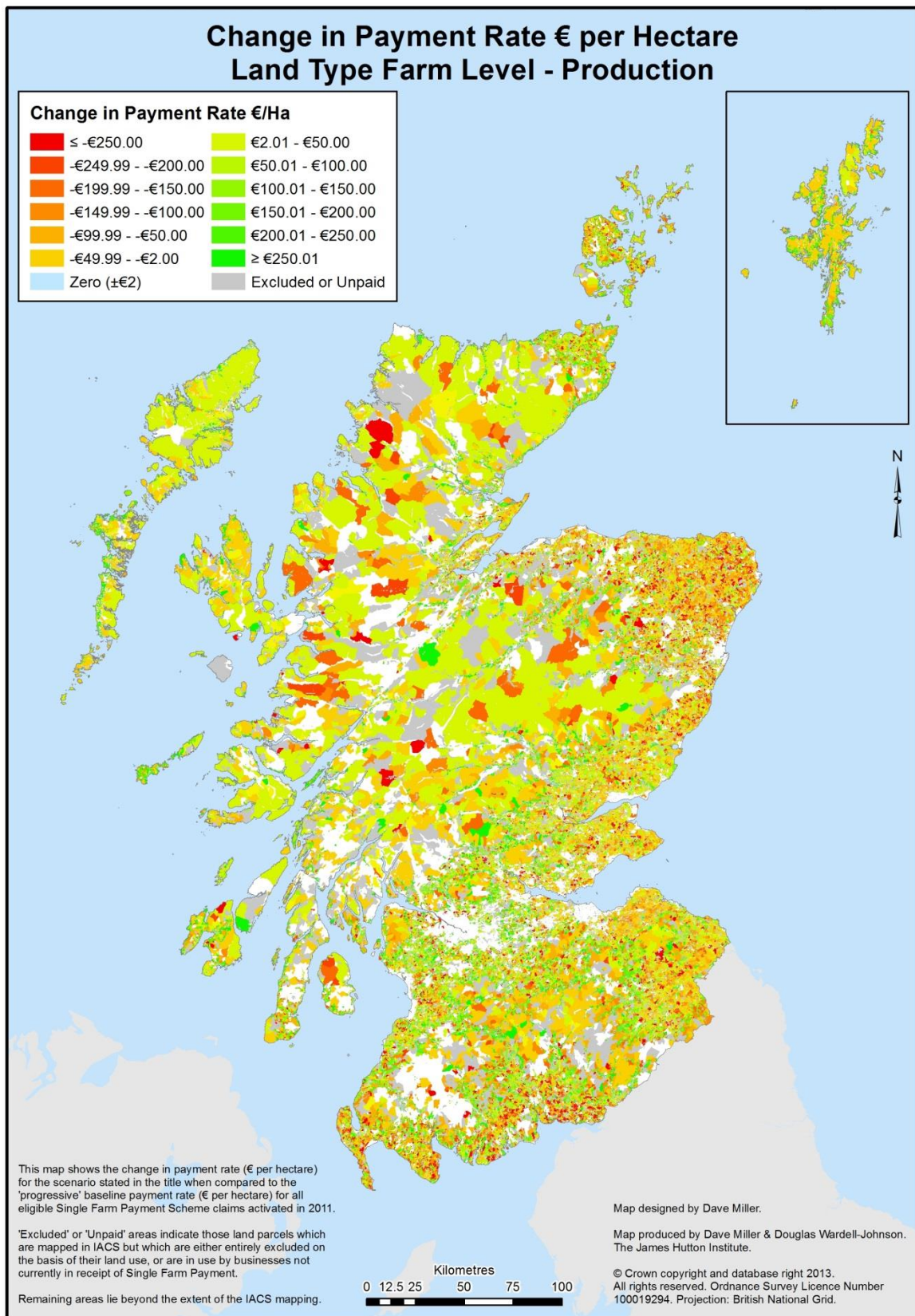




## 21. LFA Farm Level - Production Weight

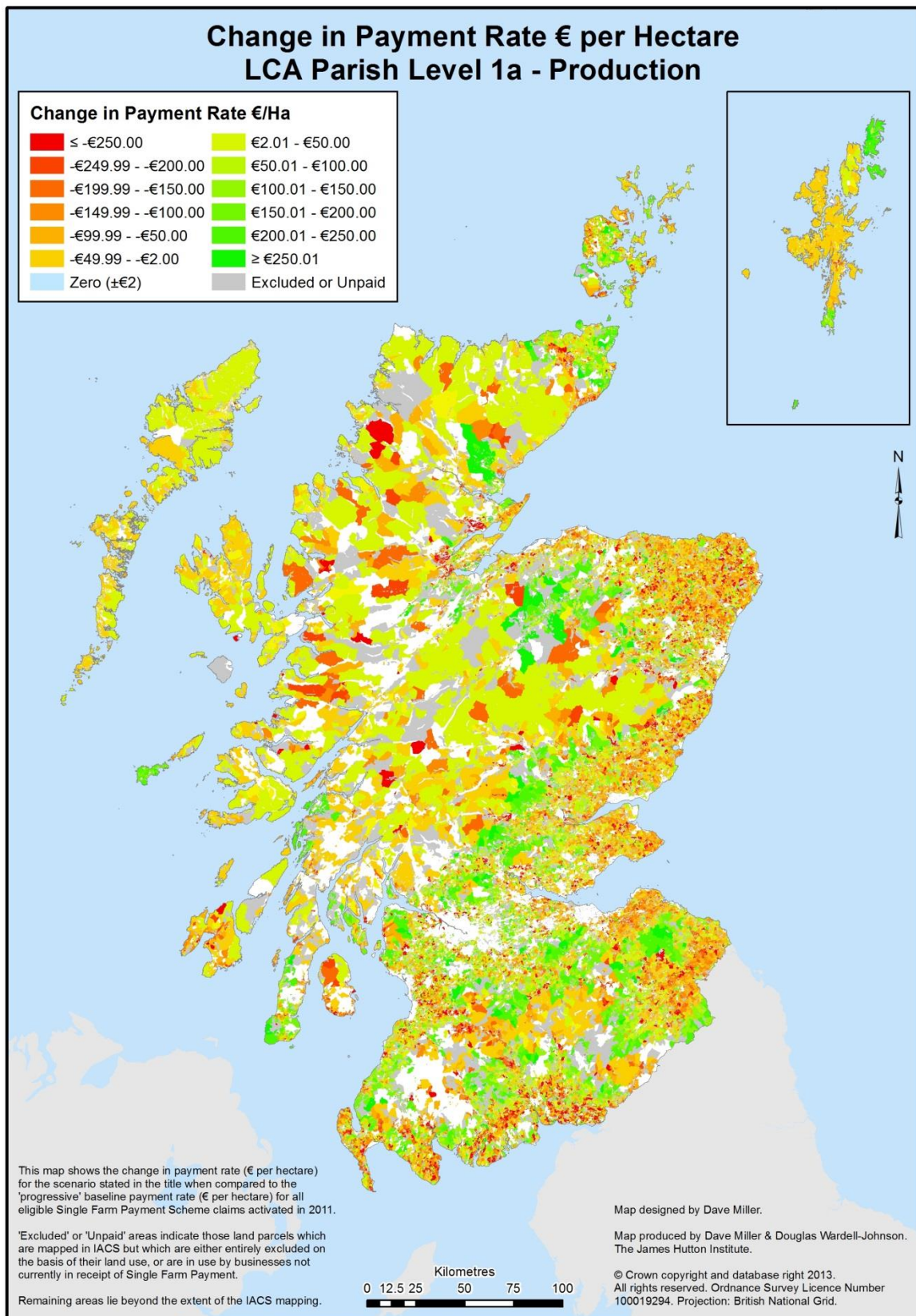


## 22. Land Type Farm Level - Production Weight

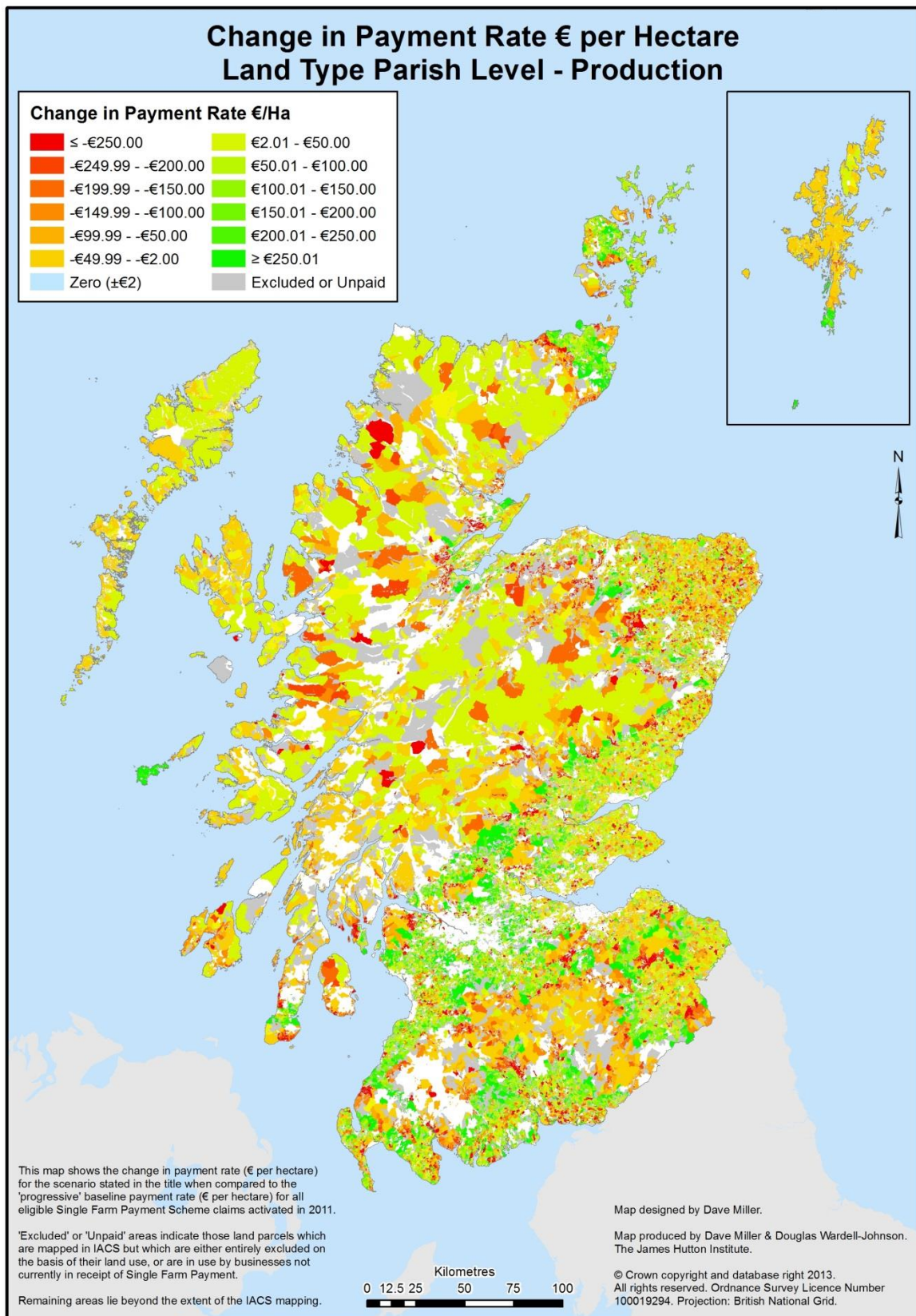




## 23. LCA Parish Level 1a - Production Weight

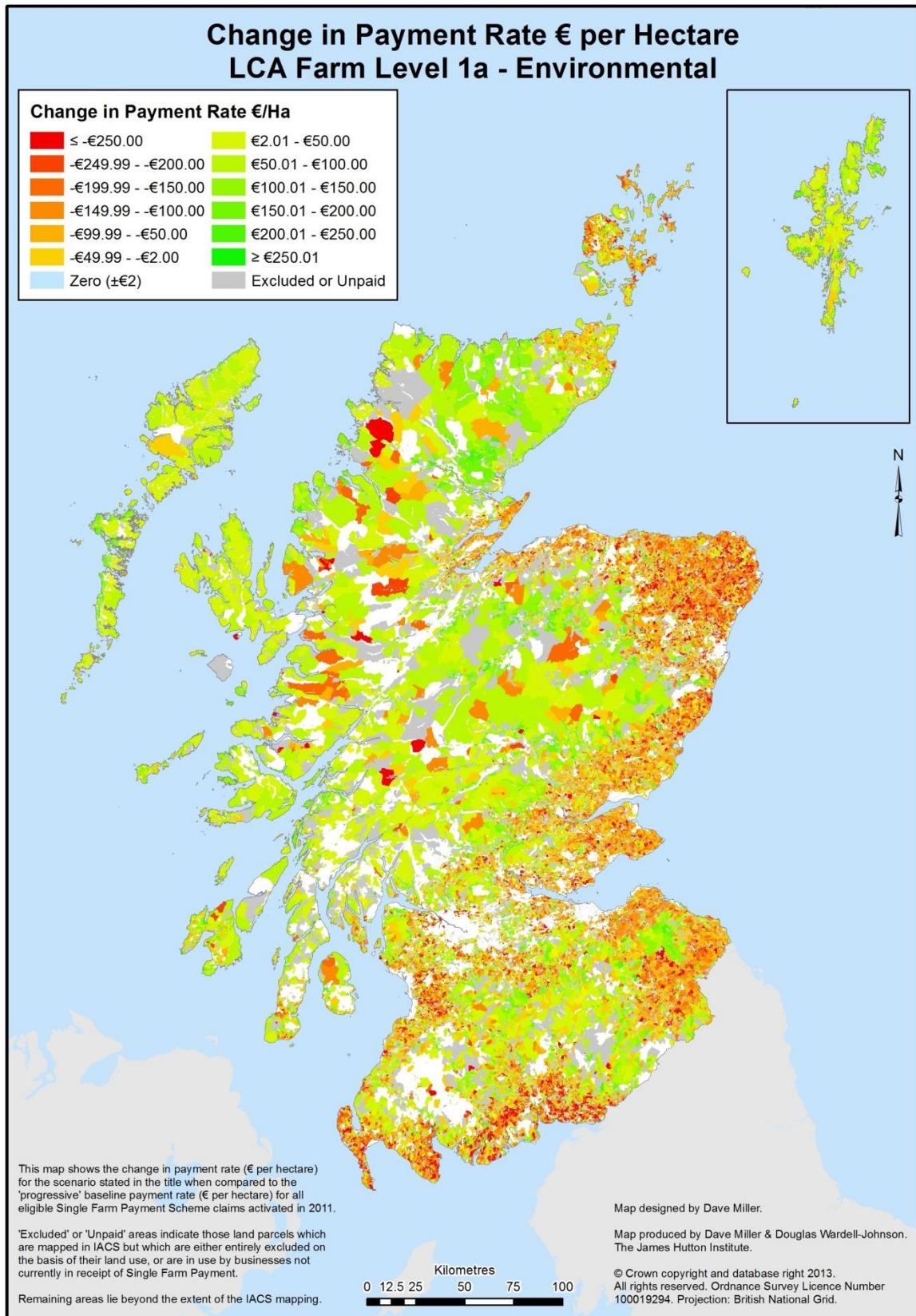


## 24. Land Type Parish - Production Weight

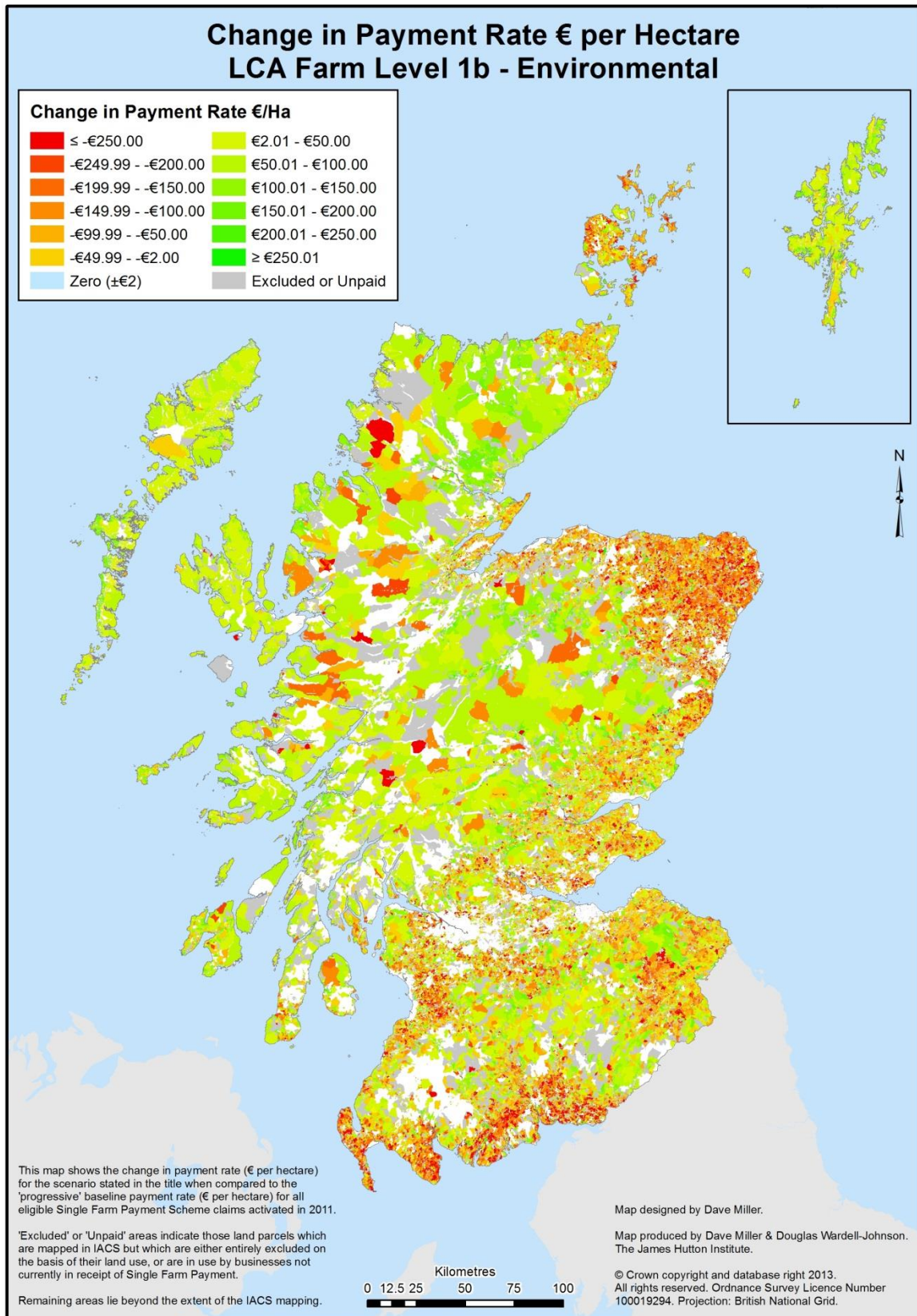




## 25. LCA Farm Level 1a – Environmental Weight

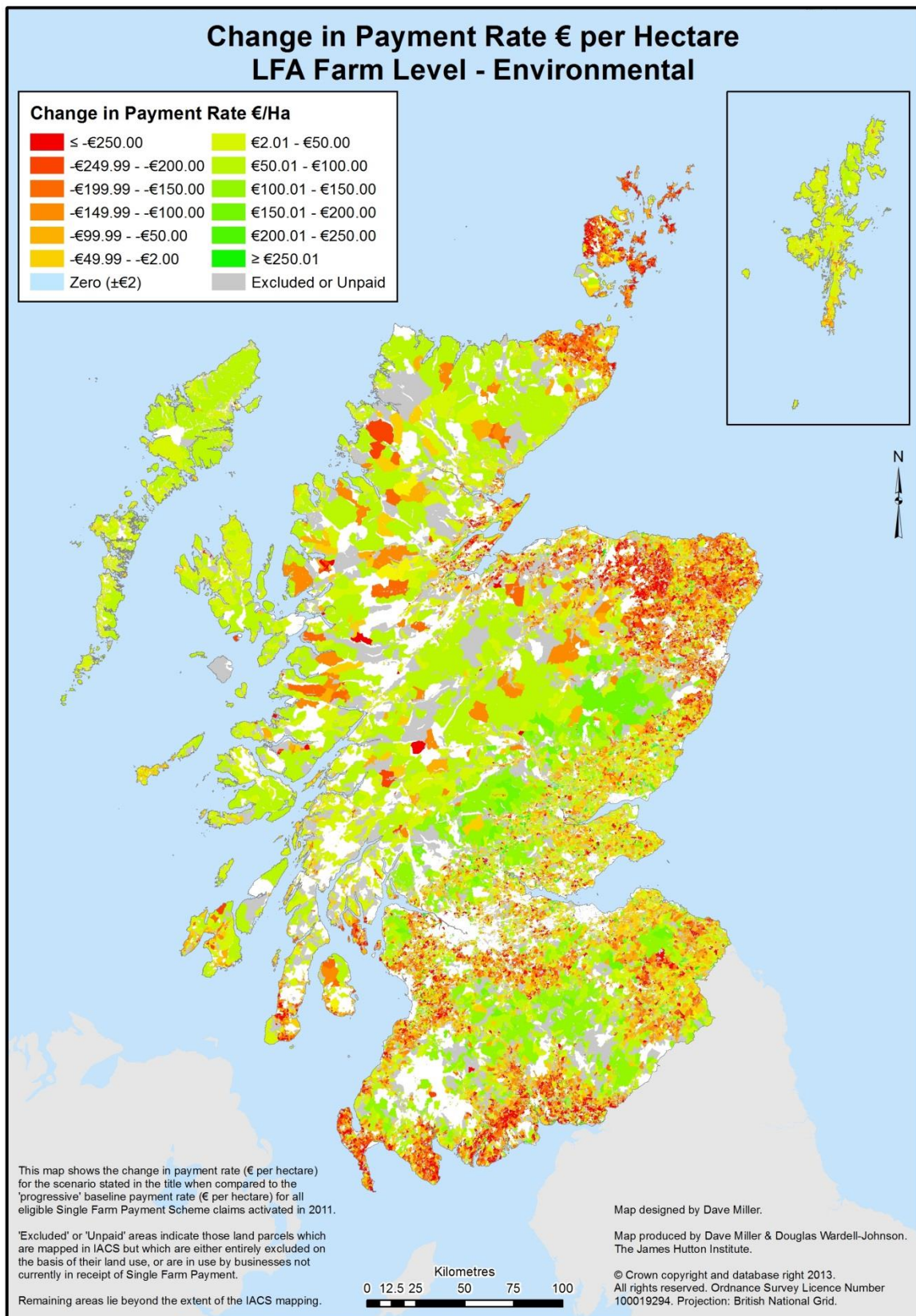


## 26. LCA Farm Level 1b – Environmental Weight

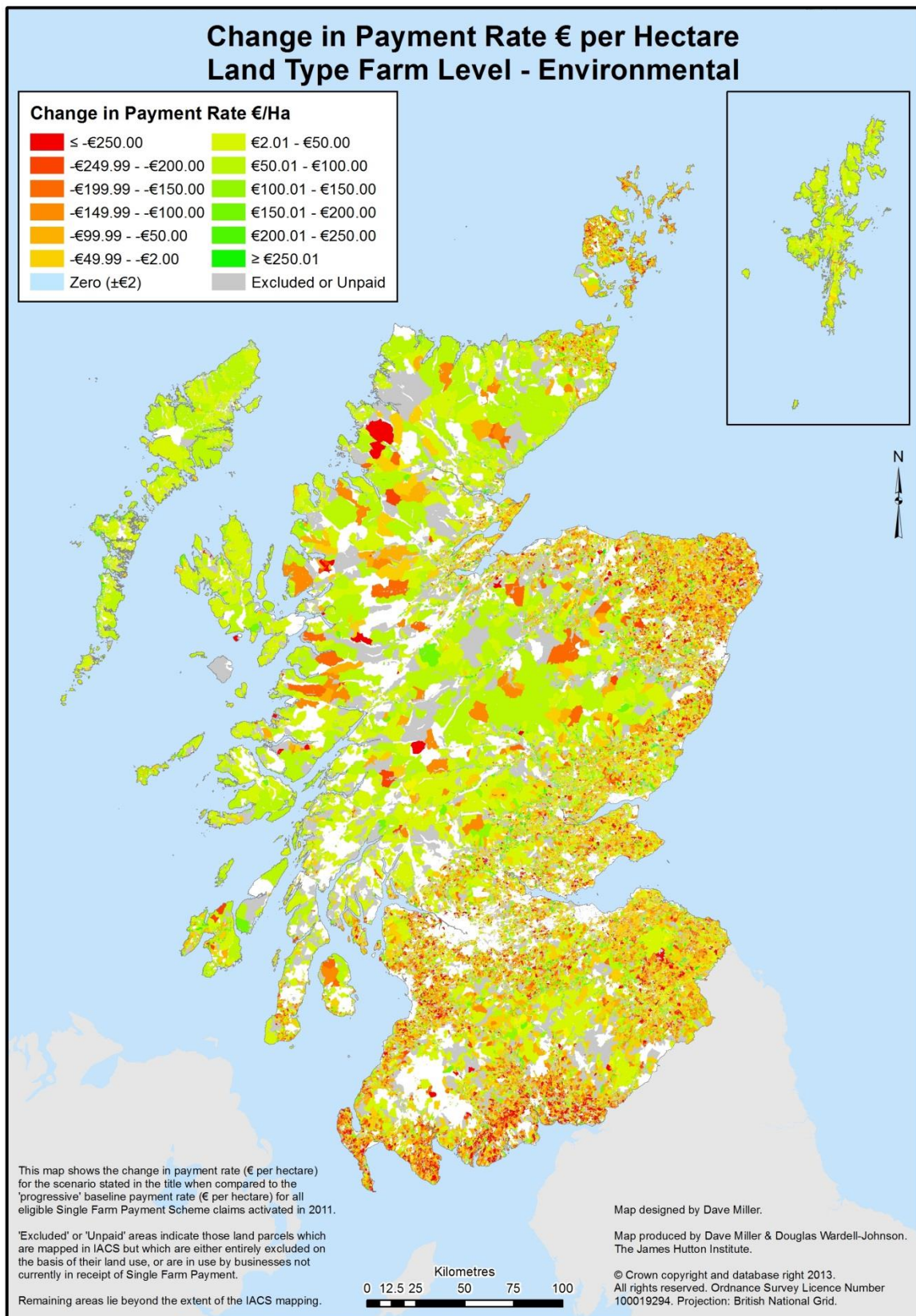




## 27. LFA Farm Level - Environmental Weight

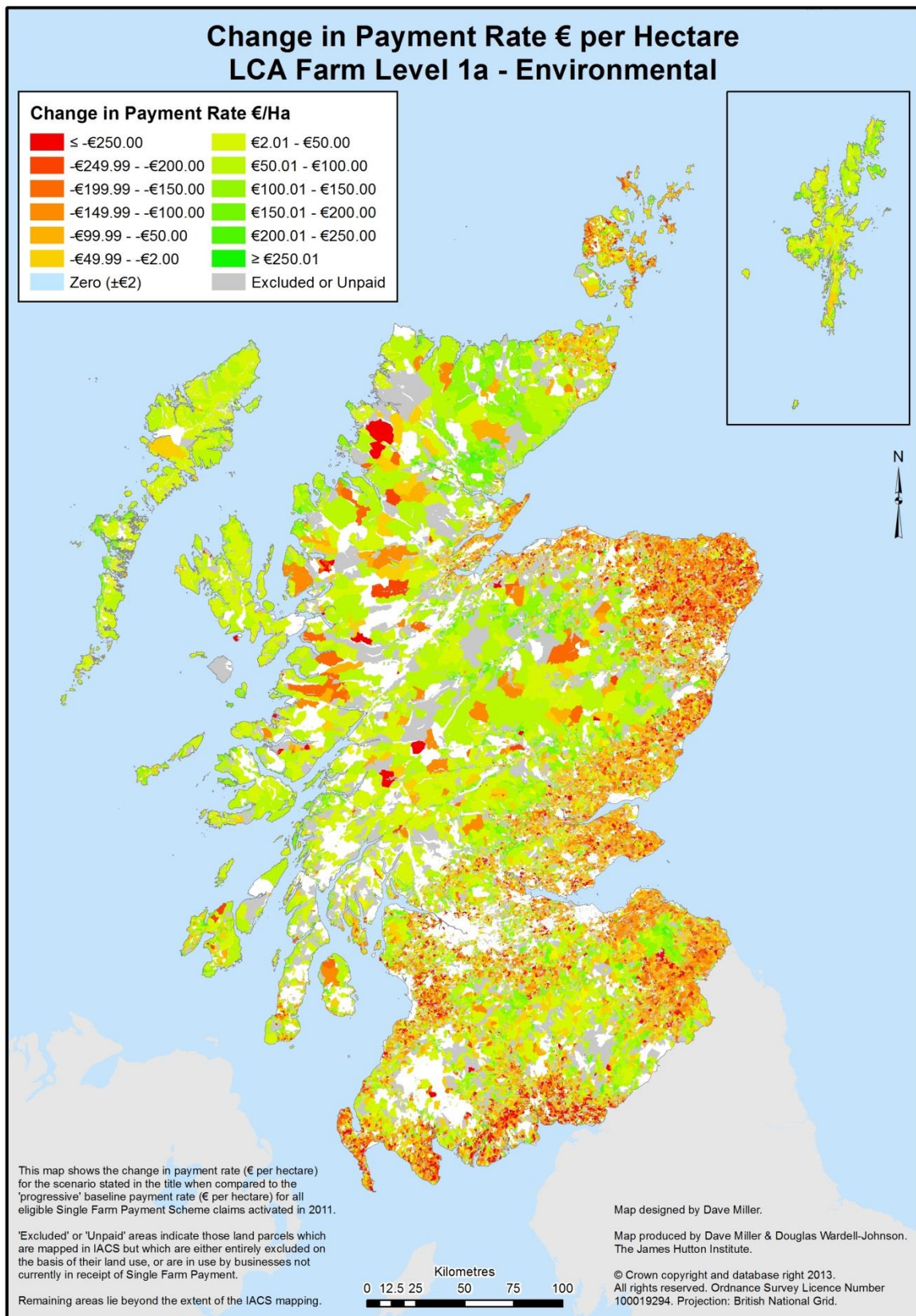


## 28. Land Type Farm Level - Environmental Weight





## 29. LCA Parish Level 1a – Environmental Weight



### 30. Land Type Parish – Environmental Weight

